

WELCOME!

Grant Line Road Precise Roadway Plan Open House

- Grant Line Road Widening
- Multi-use Trail Options



The presentation will begin at 6:05 PM.



PROJECT STAFF

Grant Line Road Precise Roadway Plan- Bond Road to Calvine Road



— John Griffin, City of Elk Grove, Senior Civil Engineer



John Stayton, City of Elk Grove, Project Manager



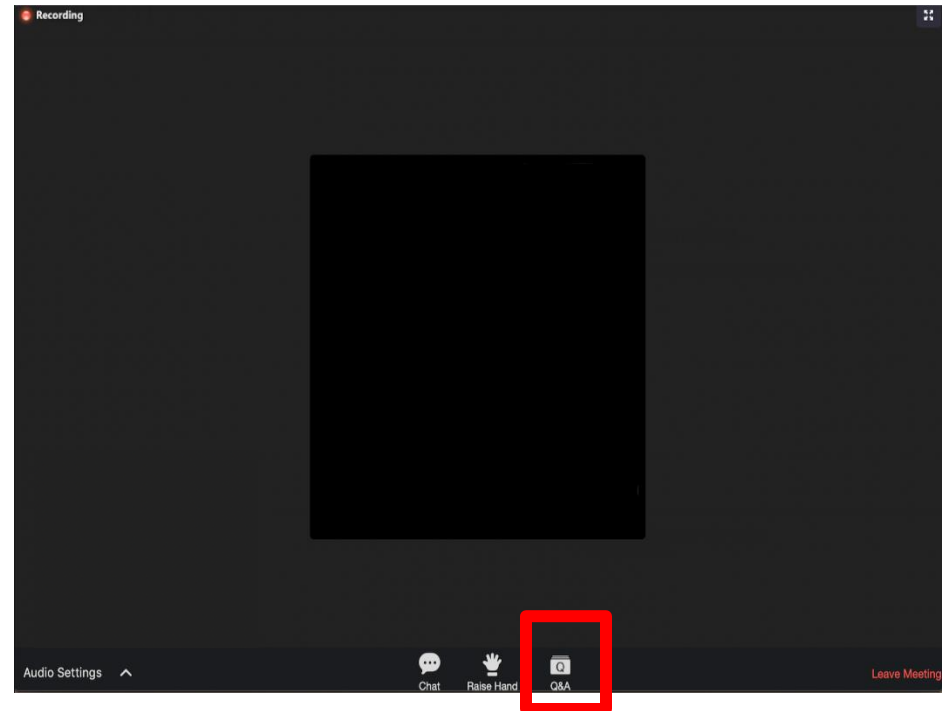
Alan Glen, AECOM, Consultant Project Manager

AGENDA FOR TONIGHT'S MEETING

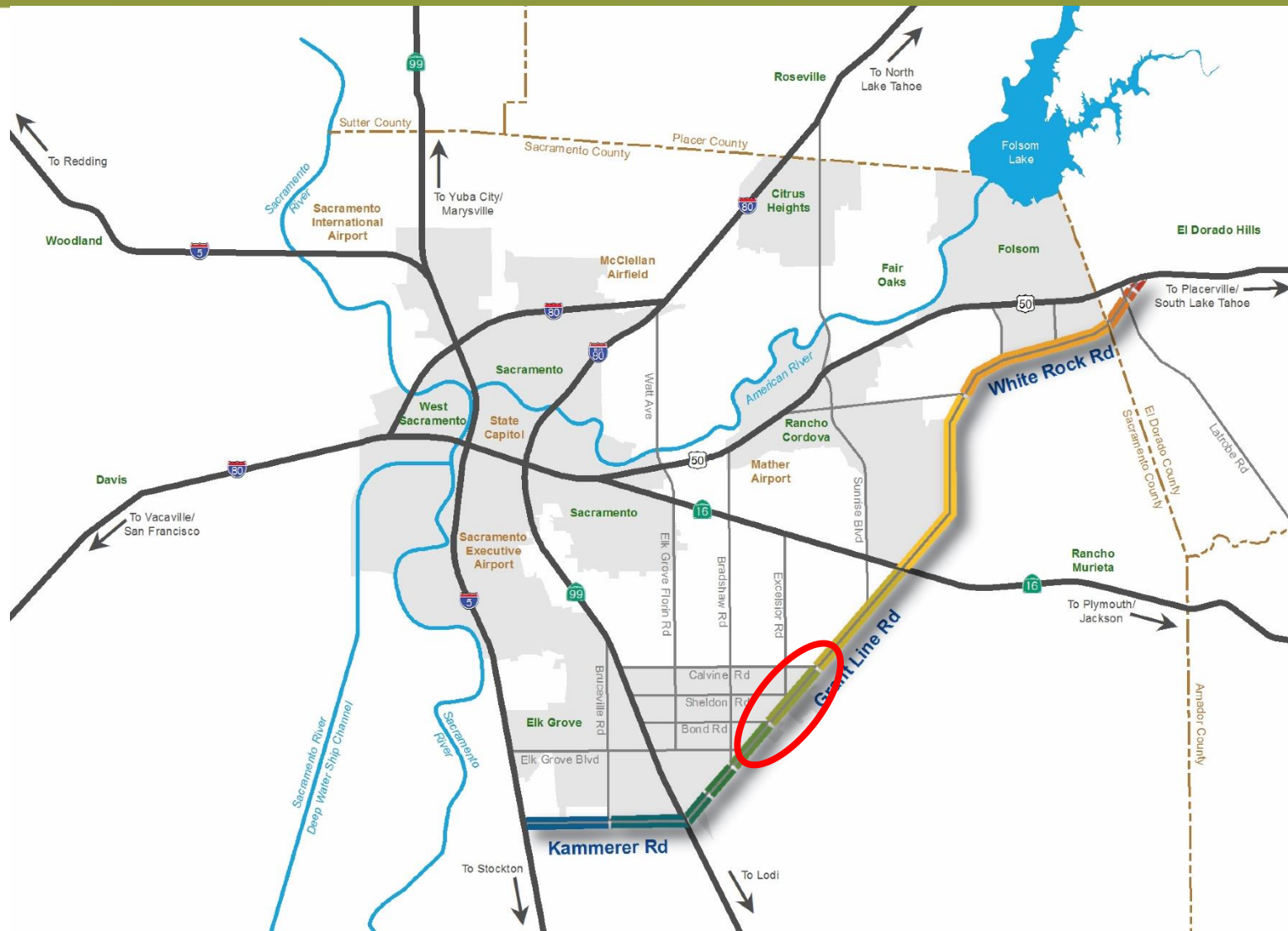
- **Presentation- 6:05 to 6:50 pm**
- **Questions & Answers- 6:50 to 8:00 pm**
- **We will post slides and alternatives tomorrow to Project Website**
- **We will collect questions from tonight and follow-up, prepare and post responses within 10 days**

HOUSEKEEPING

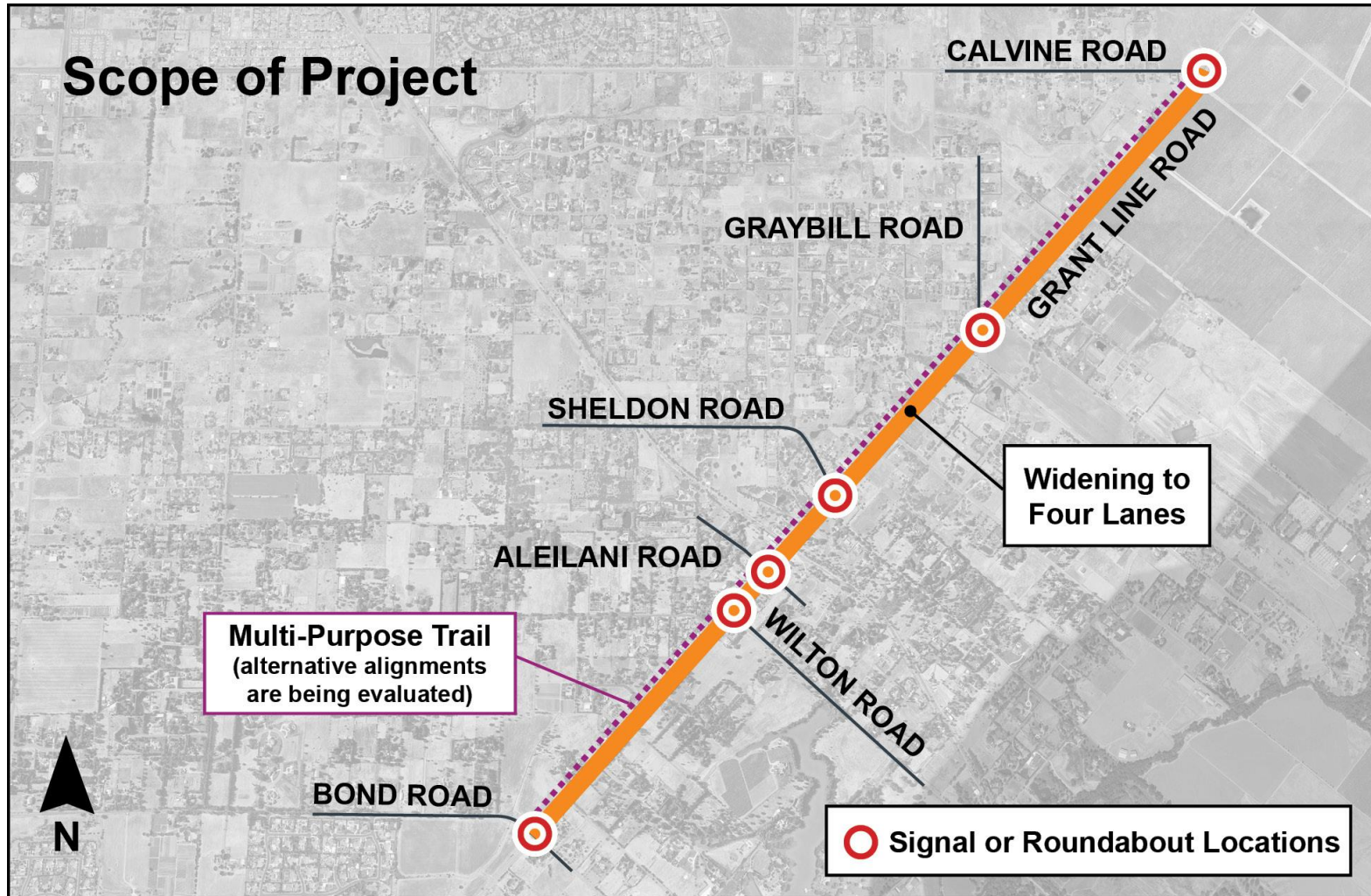
- Video and Audio is disabled by default
- We are recording the meeting
- Questions:
 - Use Q&A button at any time you have a question during the presentation or at the end.
 - At the conclusion of the presentation, staff will read the questions and provide responses.
 - If you would like to discuss specific issues regarding your property, please provide your name and email using the Q&A button. Staff will follow-up within a 10 business days to discuss with you.



PROJECT AREA



PROJECT AREA



PURPOSE OF TONIGHT'S WORKSHOP

- Provide an overview of the roadway widening alternatives and multi-use trail options
- Open forum for comments and questions
- Current Study- Grant Line Road Precise Roadway Plan

STUDY PURPOSE & OUTCOMES

- Evaluate alternatives
- Set roadway ultimate width
- Evaluate needed changes in access/ driveways, utilities and drainage
- Set future right of way lines
- Environmental Studies for Precise Roadway Plan
- City Council to adopt Precise Roadway Plan

OVERALL PROJECT SCHEDULE

- Precise Roadway Plan- Summer 2021
- No funding identified for future phases
- Future Phases:
 - Environmental- 12 to 18 months
 - Acquire Right of Way- 12 to 24 months
 - Design- 12 to 18 months
 - Construction- 18 to 24 months
- Earliest Construction Completion- approx. 2030

PROJECT BACKGROUND

- JPA SouthEast Connector- 30 Mile Corridor
- This Project- Segment C
- 2012 Program EIR
- 30 mile Class I Multi Purpose Trail on the Westside and Future Connections from Elk Grove
- City and JPA Commitment to Four Through Lanes thru Sheldon (Segment C)

GRANT LINE ROAD EXISTING CONDITIONS



GRANT LINE ROAD PROPOSED CONDITIONS

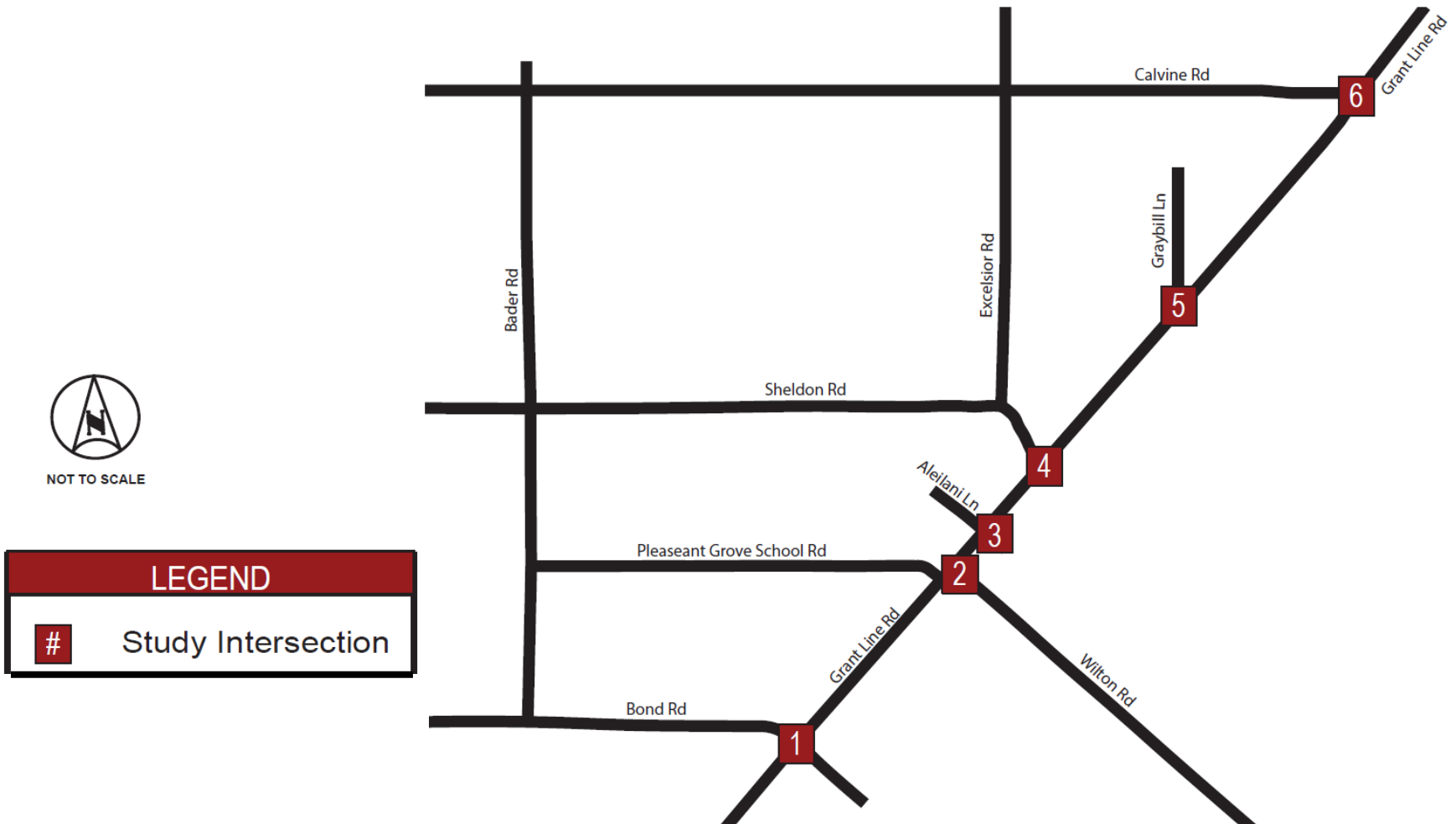


ROADWAY WIDENING ALTERNATIVES

- Alternatives being considered:
 - Alt 1A- Signaled Intersections
 - Alt 1B- Same as Alt 1A with realigned Mooney Road into Sheldon Road intersection
 - Alt 2A- Roundabout Intersections
 - Alt 2B- Same as Alt 2A with realigned Wilton Road to new intersection location
 - Alt 2C- Similar to Alt 2B with roundabout at Leisure Oak Lane

INTERSECTIONS

Study Intersections- Signals or Roundabouts



INTERSECTION SIZING

Study Intersections- Signals or Roundabouts

- JPA Studies- traffic forecasts to 2036
- Intersections are key to long term operations
- Project sizes intersections to “ultimate” needs
- Traffic forecasts set for buildout of the City
(2050 horizon)

DRIVEWAY CONSOLIDATION

- The existing corridor has a significant number of driveways, some are closely spaced
- The exhibits will show some driveway closures or relocations, but no decisions have been made
- The overall safety and operations along the corridor will be improved with driveway consolidation, where possible
- Contact us to discuss your property so we get this right!

MULTI-USE TRAIL OPTIONS

- Trail Options being considered:
 - Option 1- Congruent Trail on westside of Grant Line
 - Option 2- Trail shifts to Eastside with intersection crossings
 - Option 3- Trail shifts to eastside with bridge crossings (Alt 1 only)
- Removal of separate equestrian trail

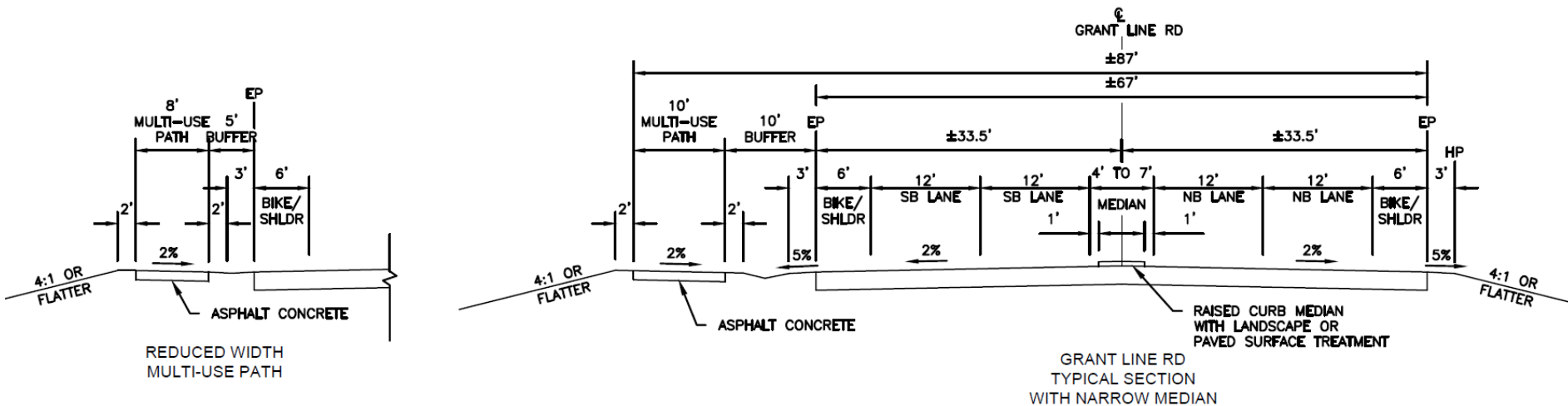
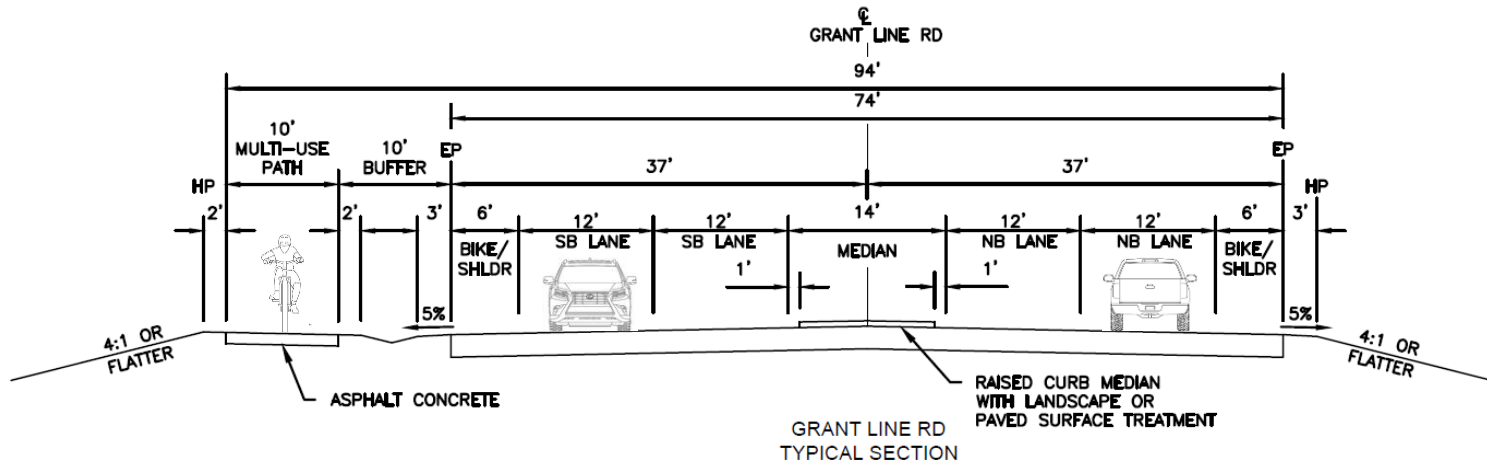
SIGNAL ALTERNATIVE- 1A

- 6 Signalized Intersections
 - Bond Road
 - Wilton Road
 - Aleilani Lane
 - Sheldon Road
 - Graybill Lane
 - Calvine Road



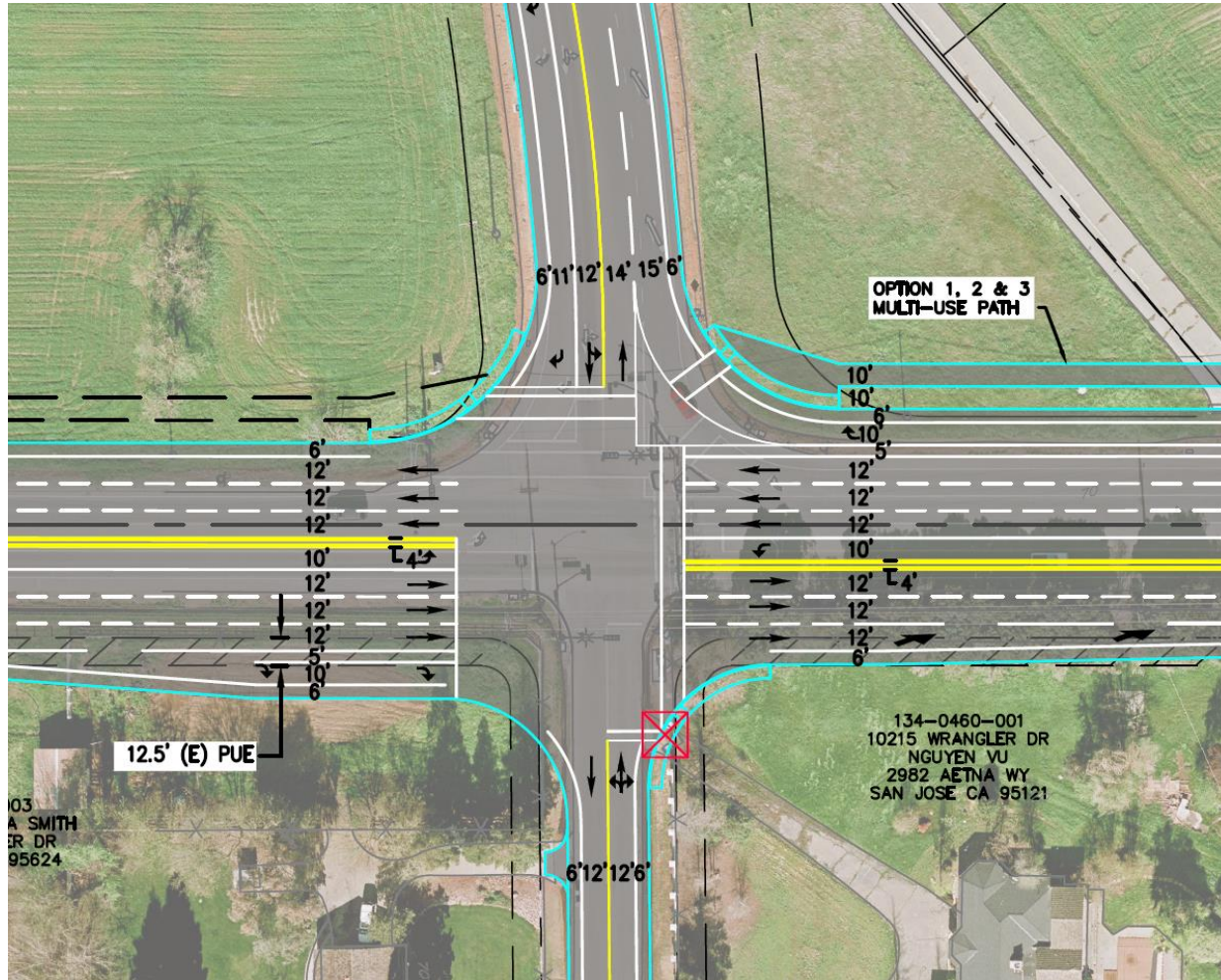
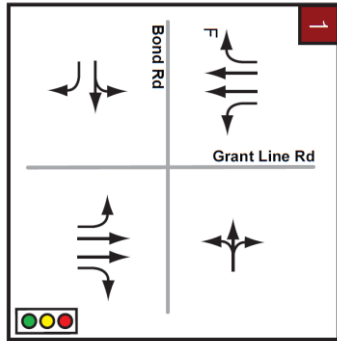
SIGNAL ALTERNATIVE 1

Typical Sections

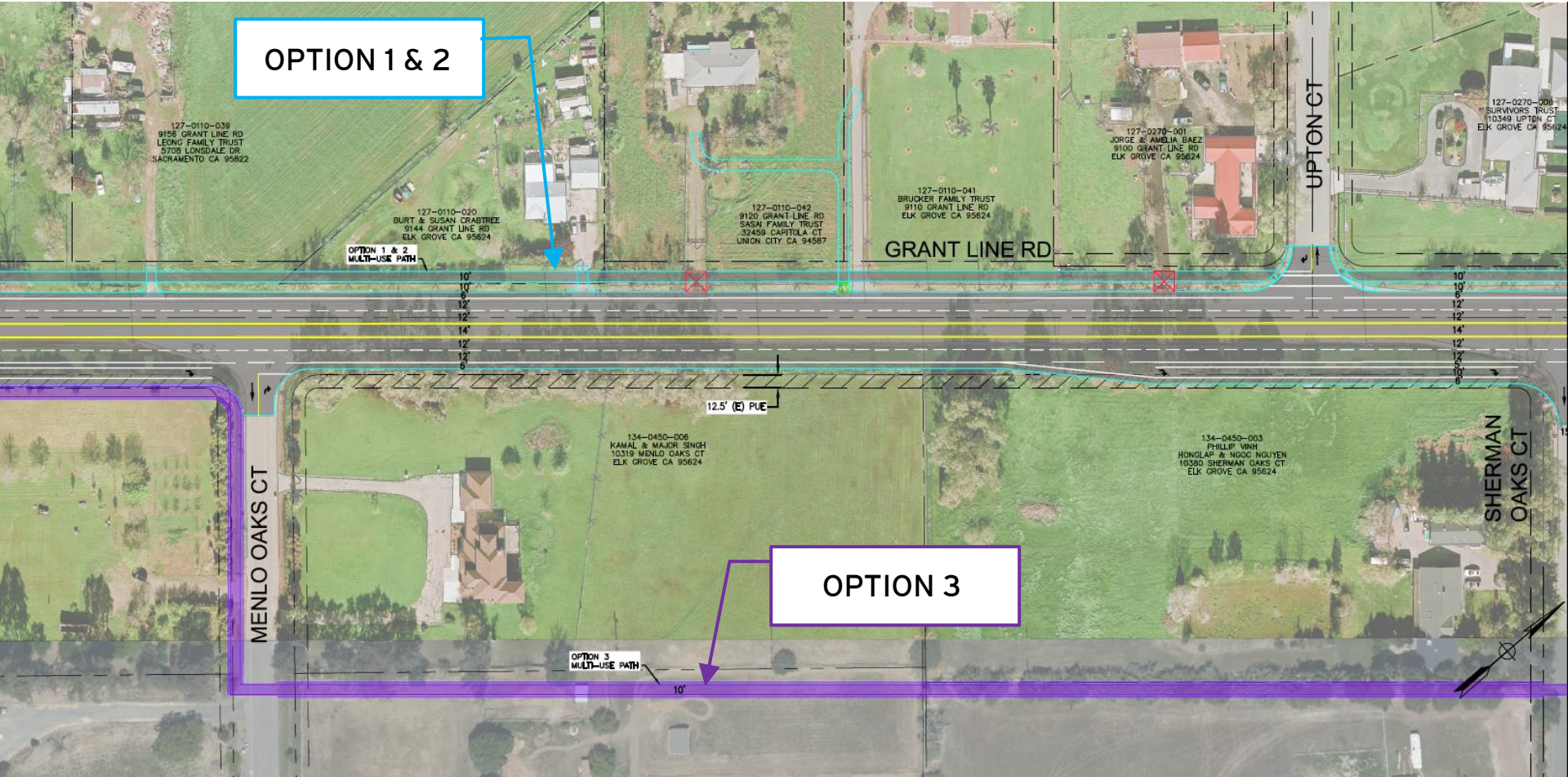


SIGNAL ALTERNATIVE 1A

Intersection: Grant Line Rd/Bond Rd

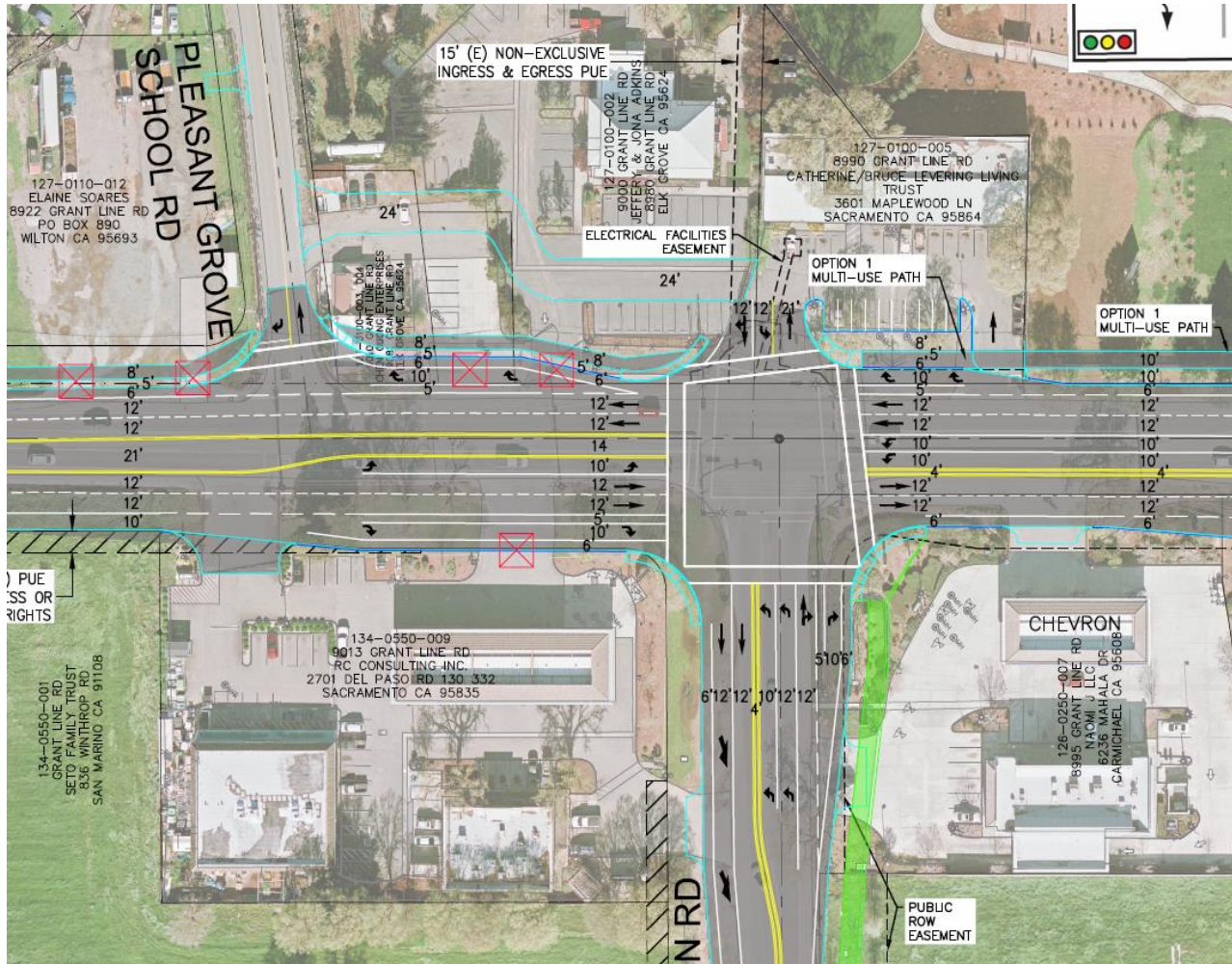
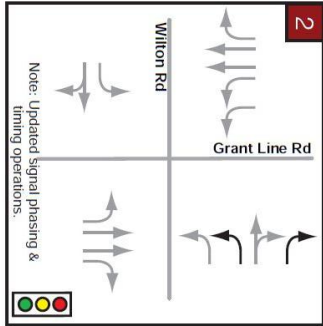


SIGNAL ALTERNATIVE 1A



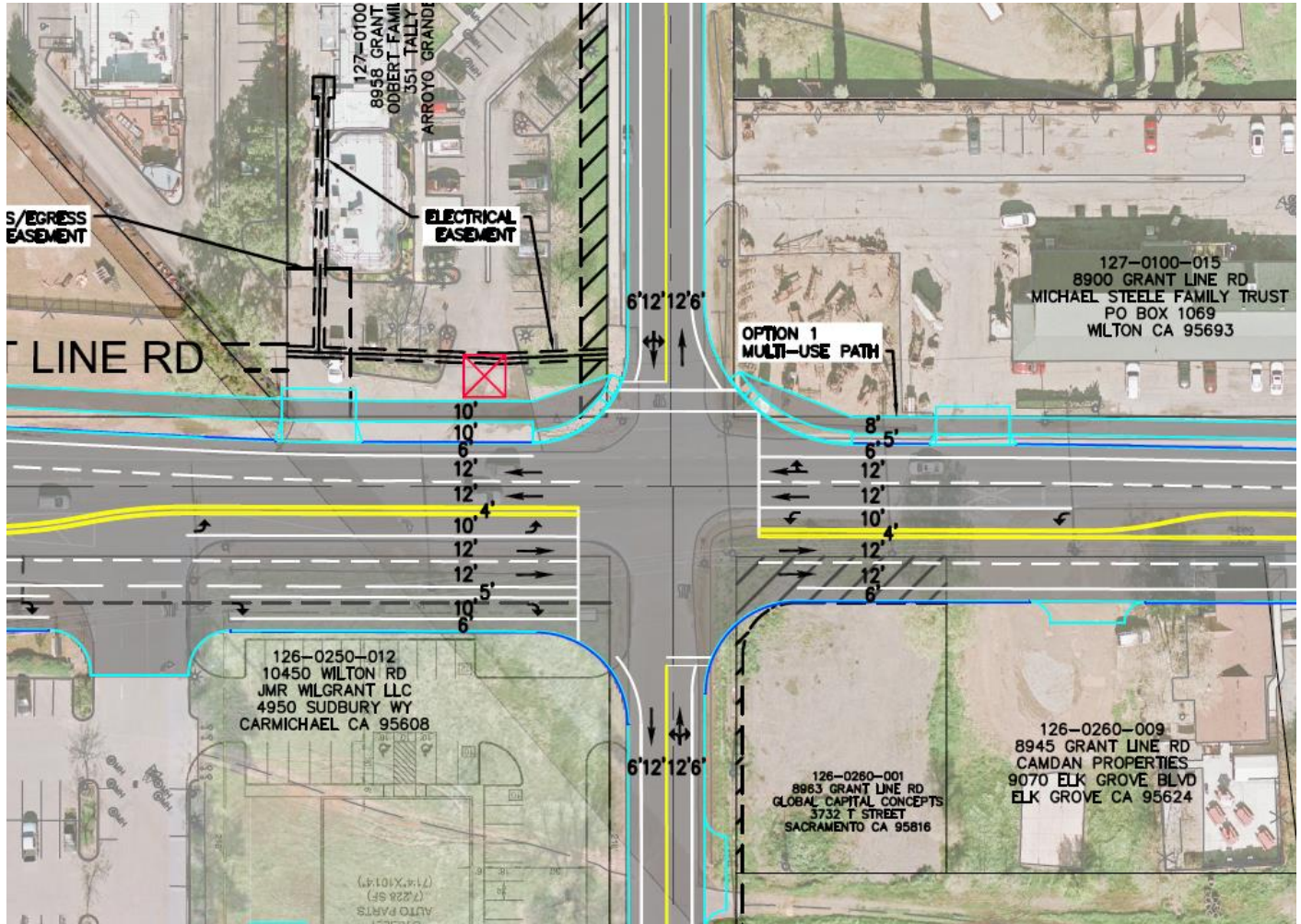
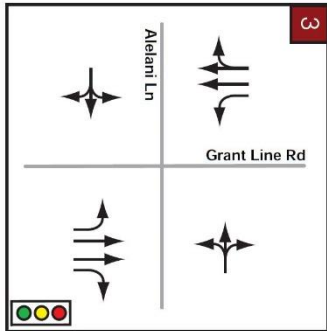
SIGNAL ALTERNATIVE 1A

Intersection: Grant Line Rd/Wilton Rd



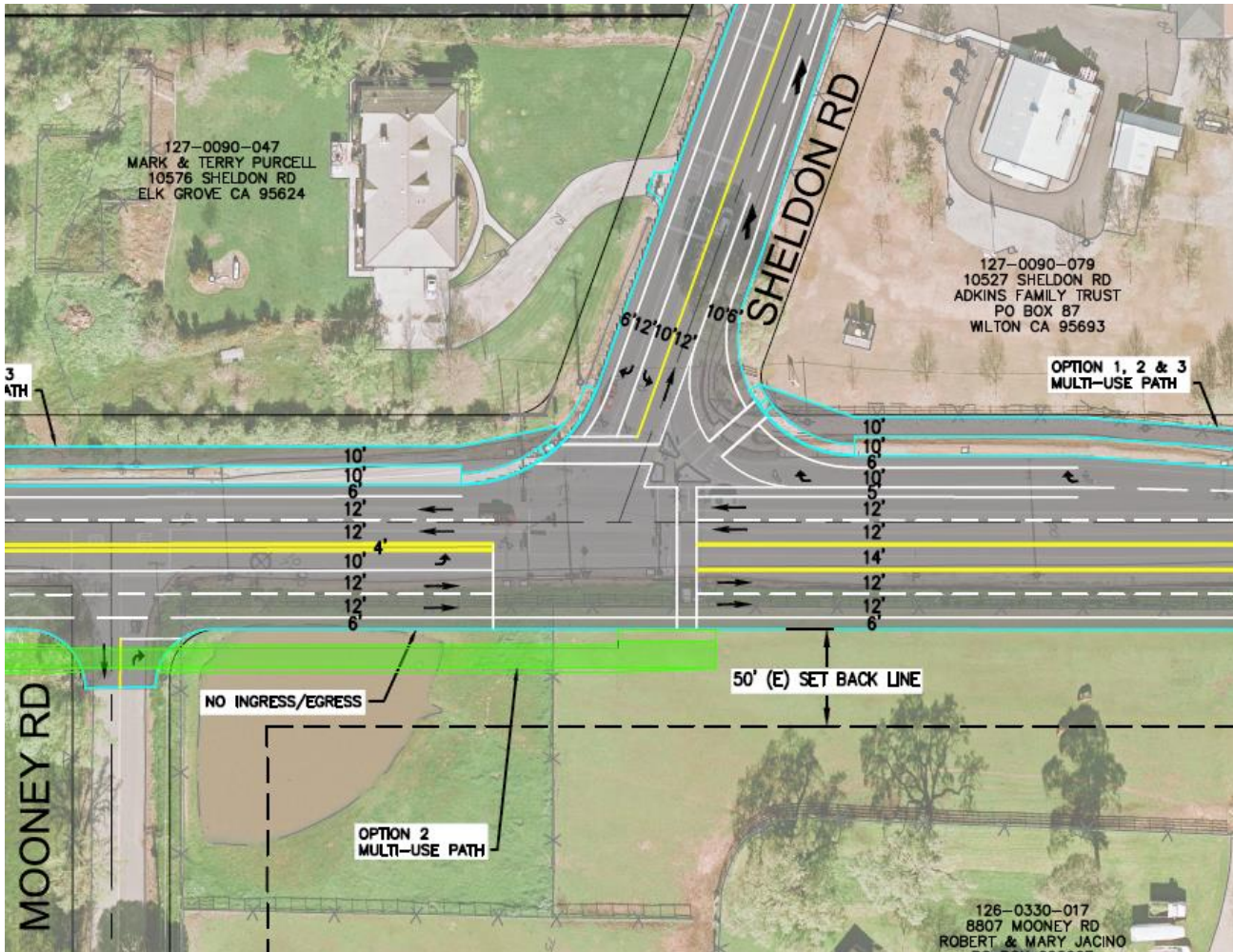
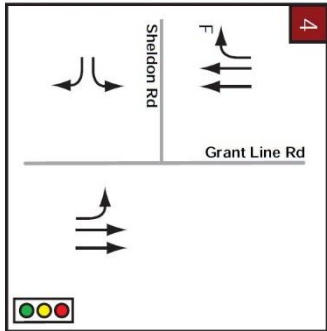
SIGNAL ALTERNATIVE 1A

Intersection: Grant Line Rd/Aleilani Ln



SIGNAL ALTERNATIVE 1A

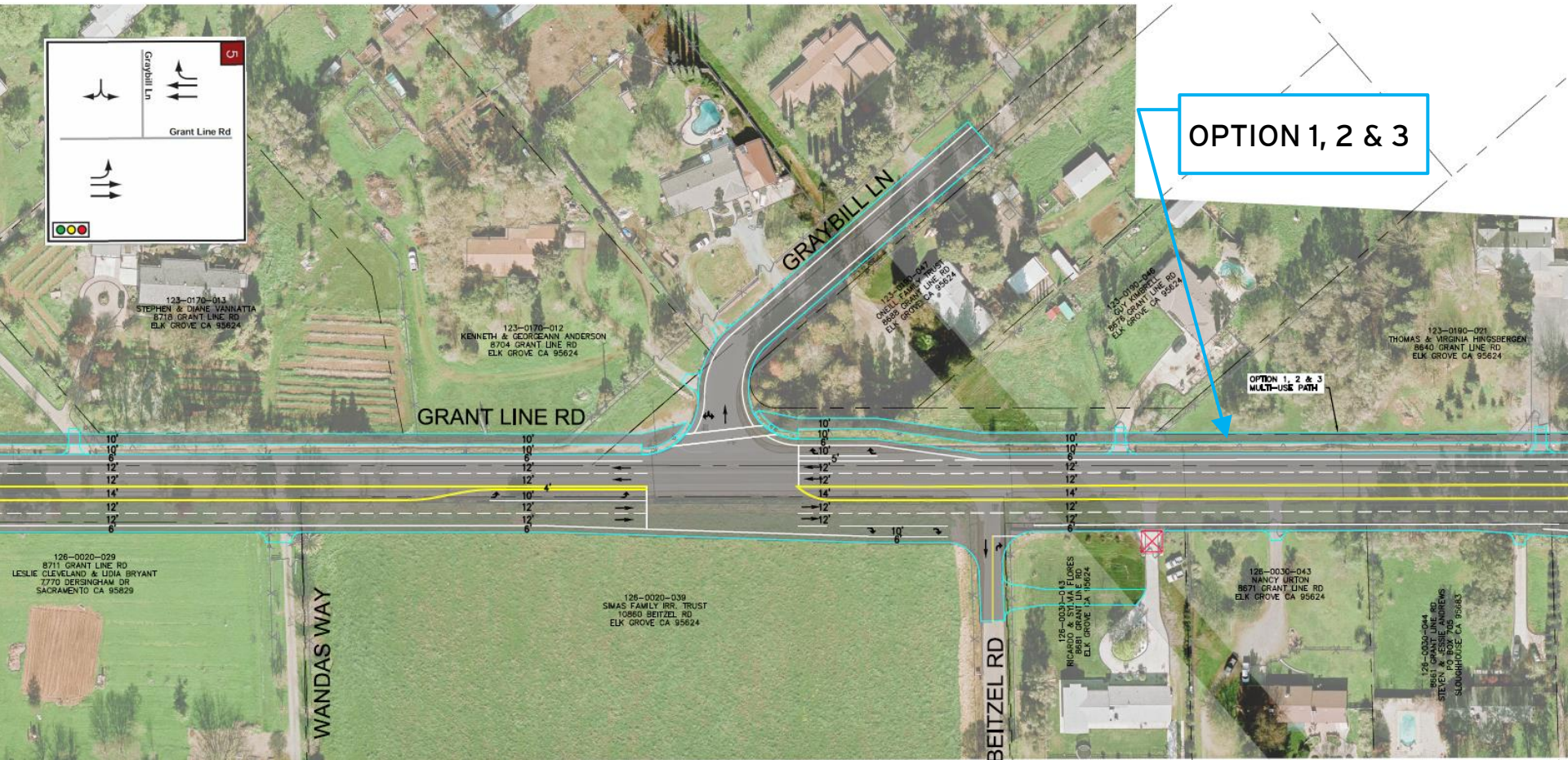
Intersection: Grant Line Rd/Sheldon Rd



SIGNAL ALTERNATIVE 1A

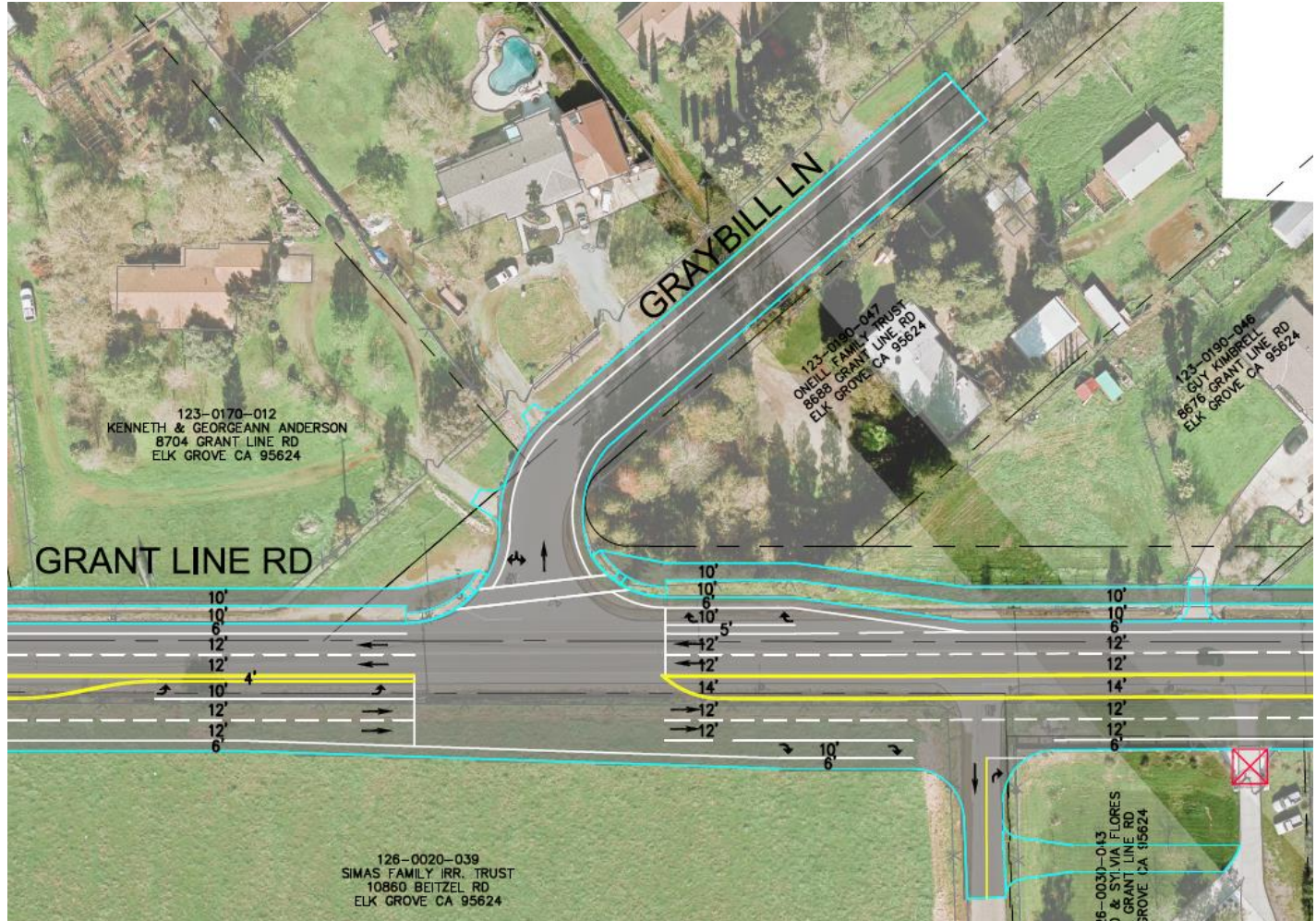
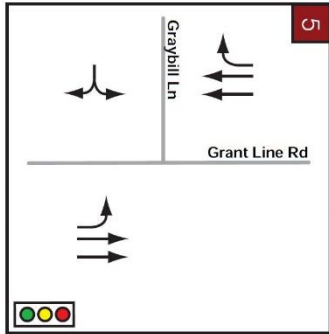


SIGNAL ALTERNATIVE 1A

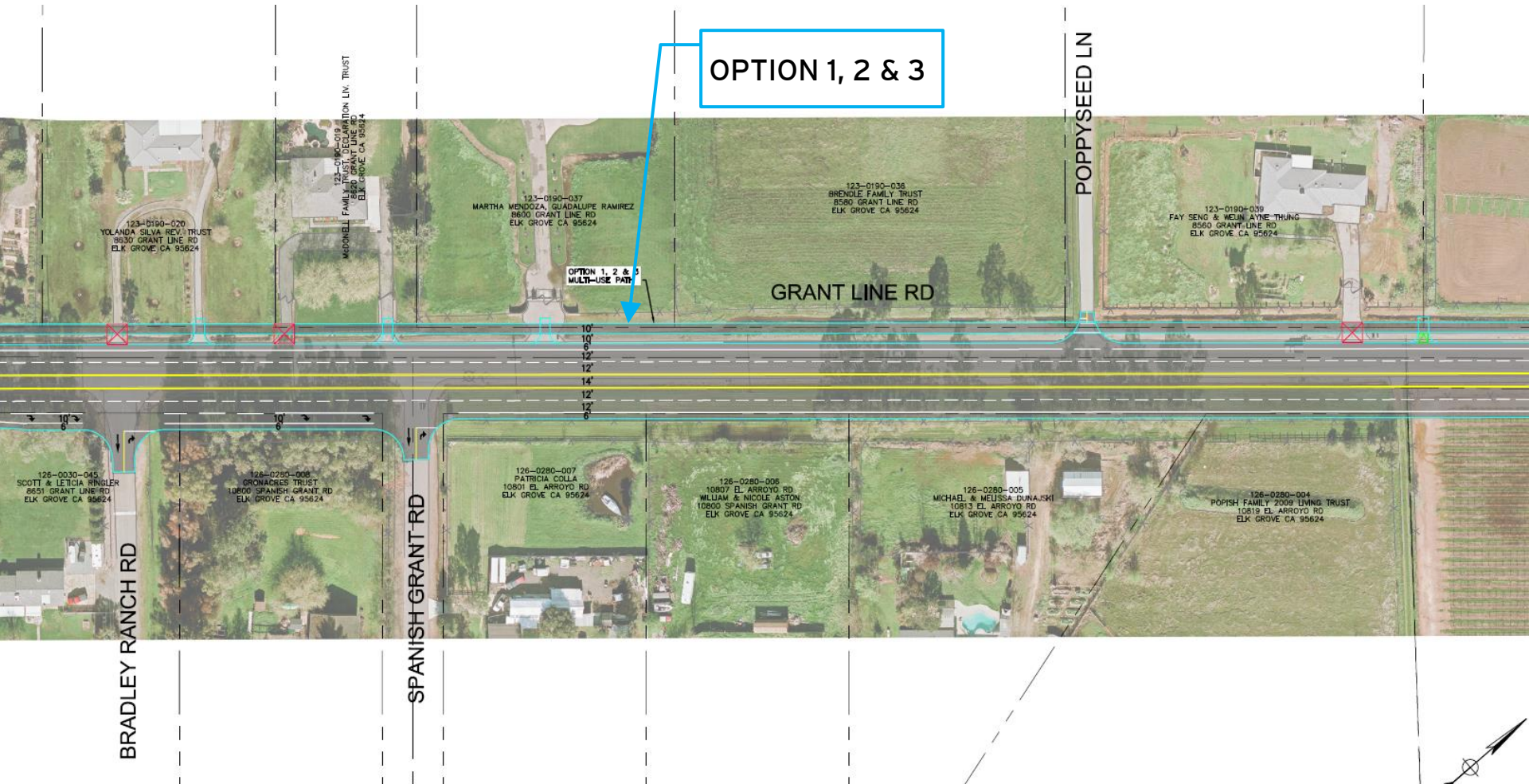


SIGNAL ALTERNATIVE 1A

Intersection: Grant Line Rd/Graybill Ln

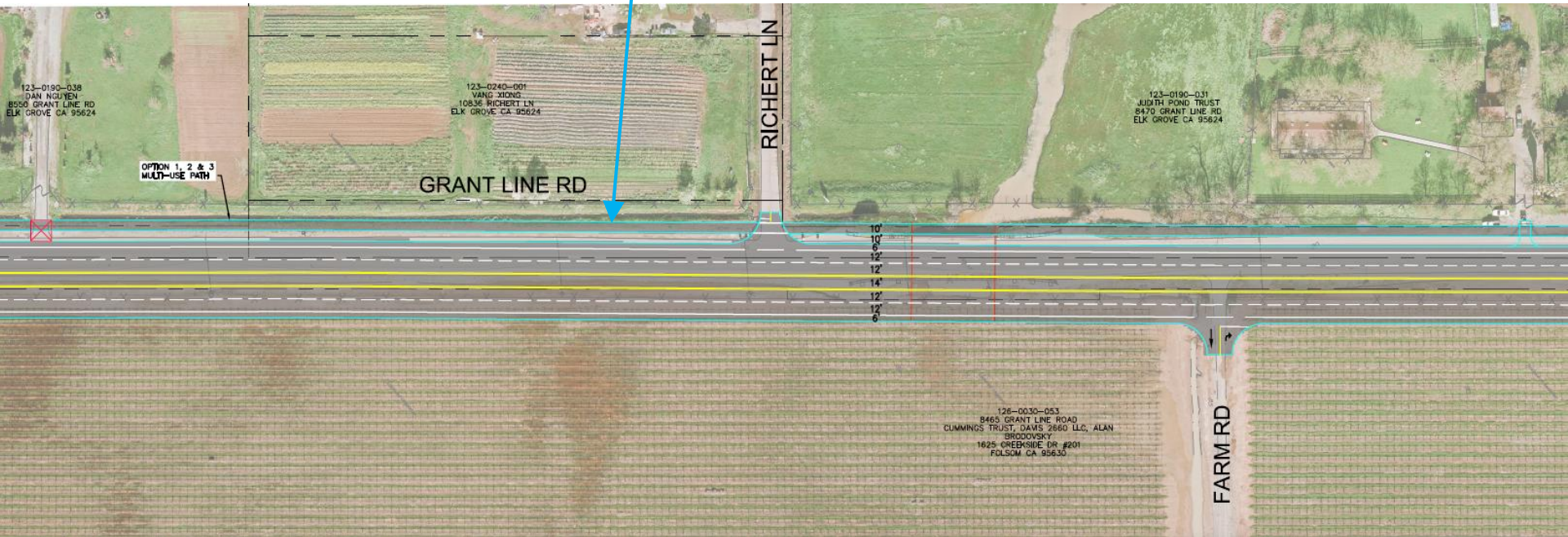


SIGNAL ALTERNATIVE 1A



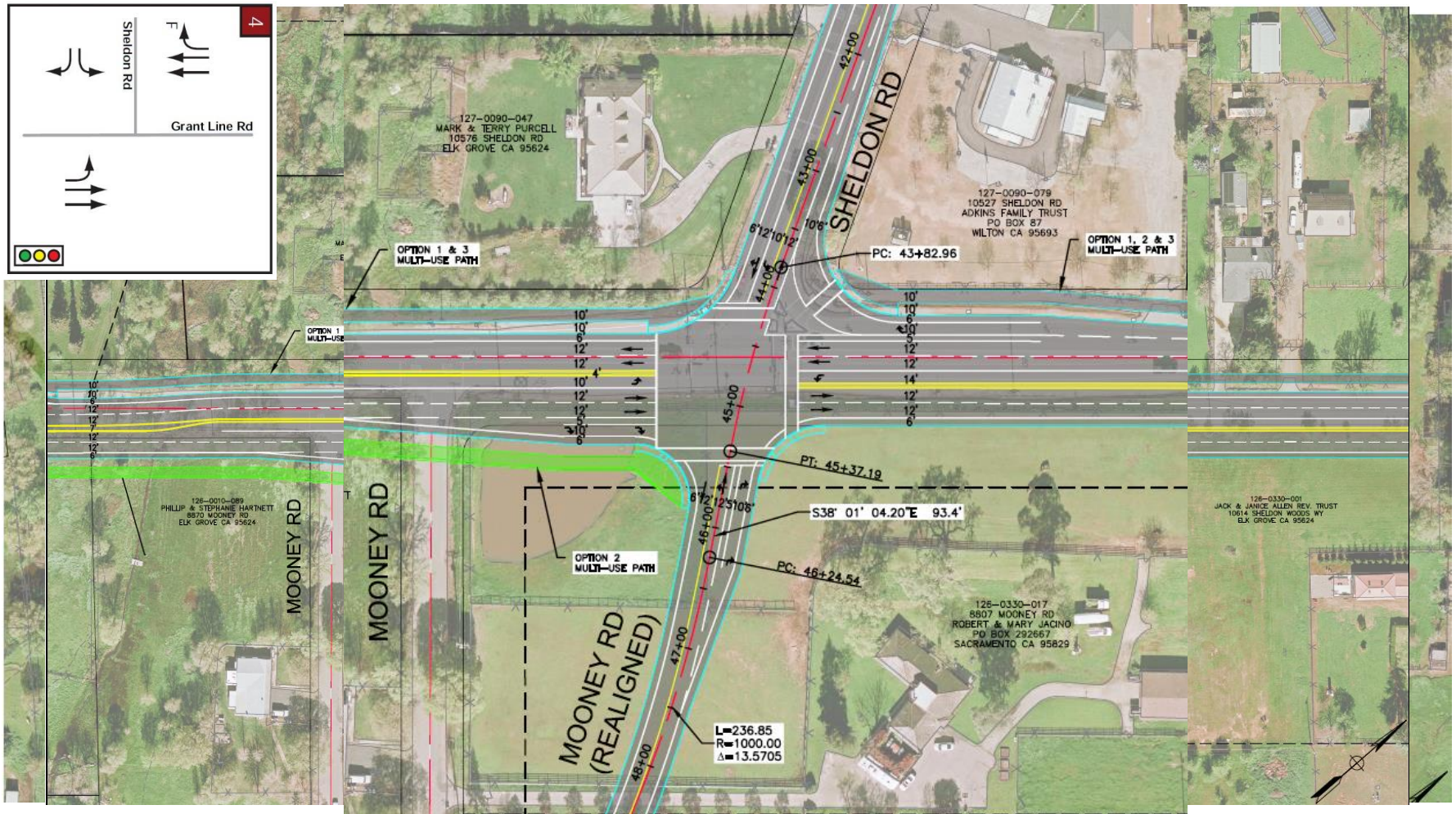
SIGNAL ALTERNATIVE 1A

OPTION 1, 2 & 3



SIGNAL ALTERNATIVE 1B

Intersection: Grant Line Rd/Sheldon Rd (Mooney Rd Realigned)



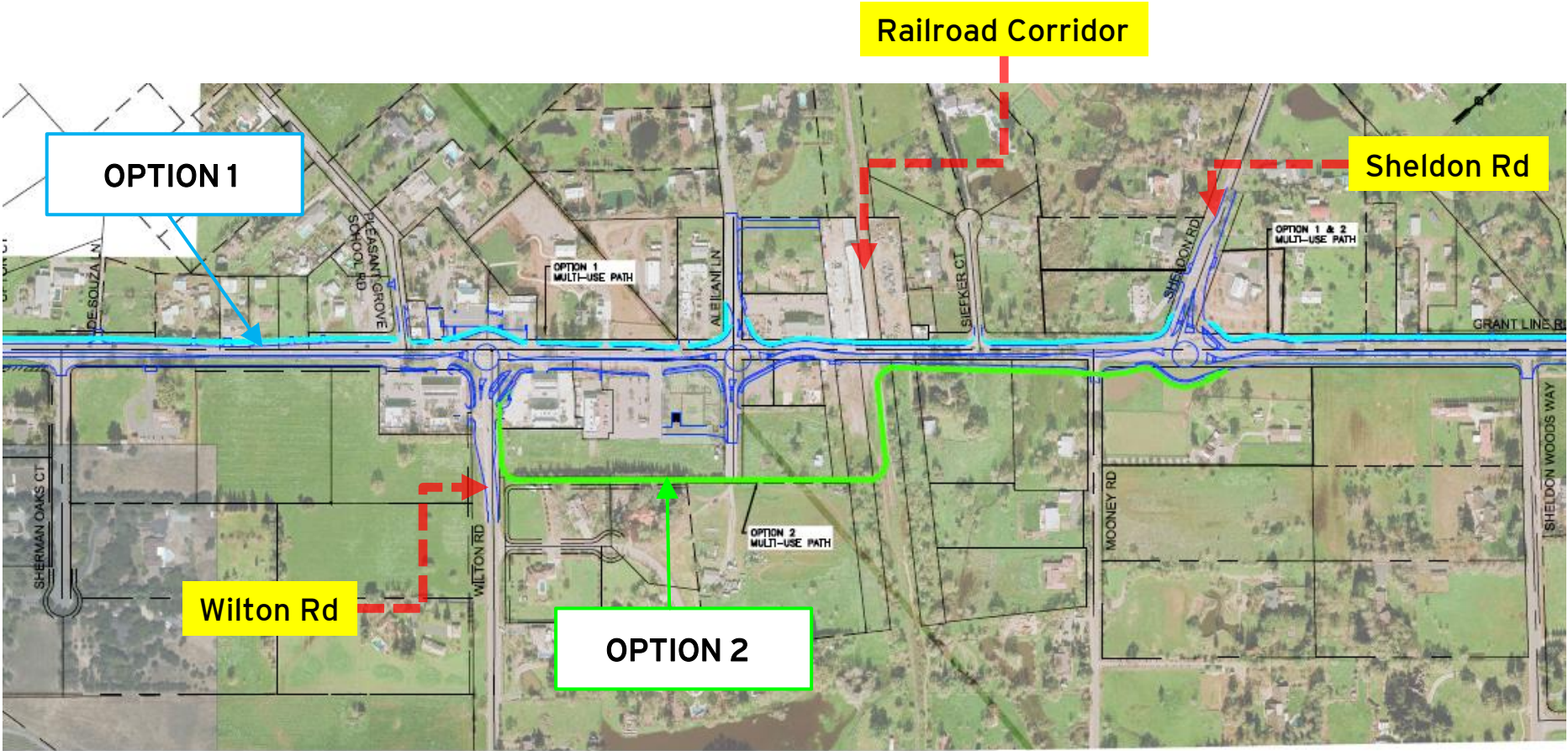
ROUNDAABOUT ALTERNATIVE- 2A

- **6 Roundabout Intersections**
 - Bond Road
 - Wilton Road
 - Aleilani Lane
 - Sheldon Road
 - Graybill Lane
 - Calvine Road



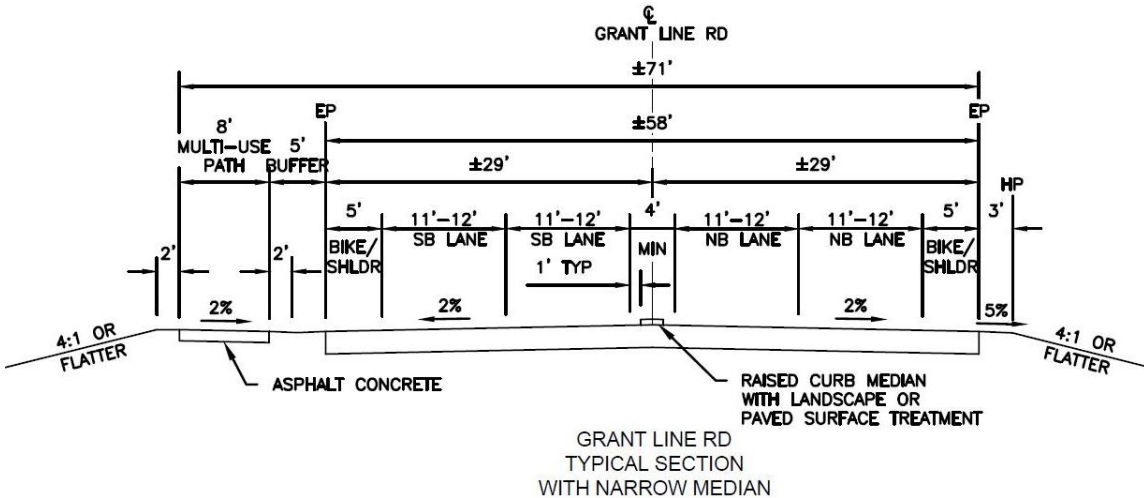
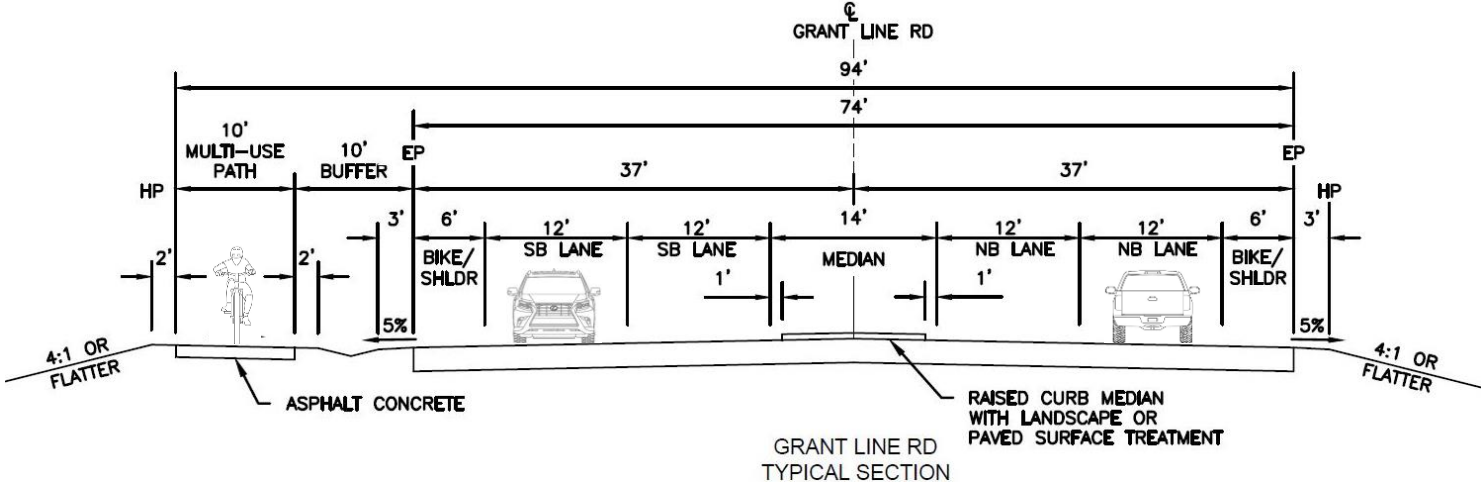
MULTI-USE TRAIL OPTIONS

Alternative 2-Roundabouts



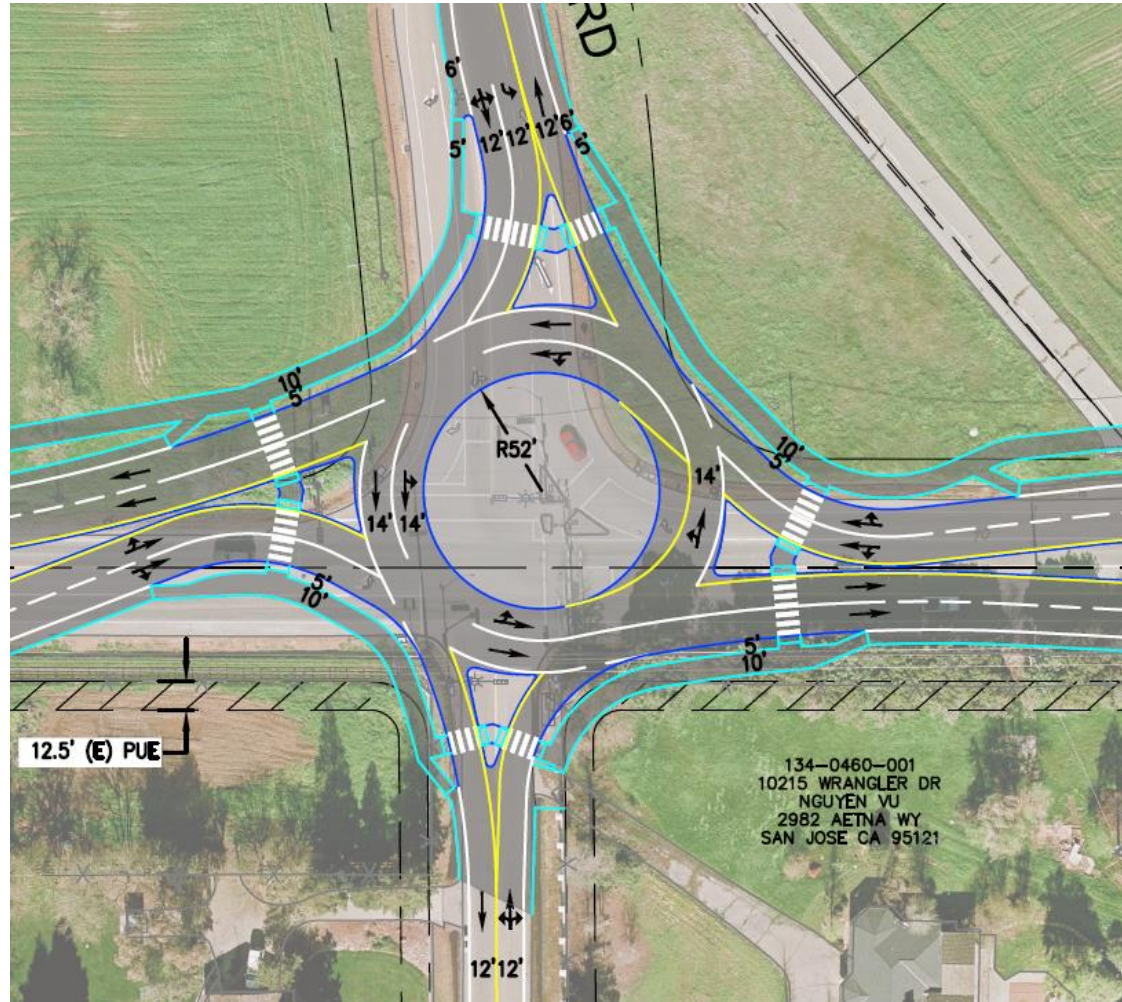
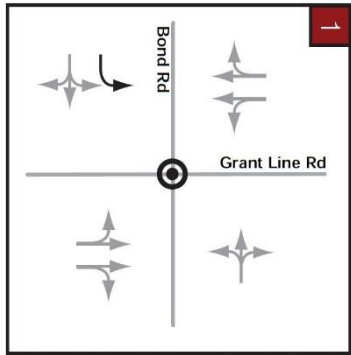
ROUNDBABOUT ALTERNATIVES

Typical Sections

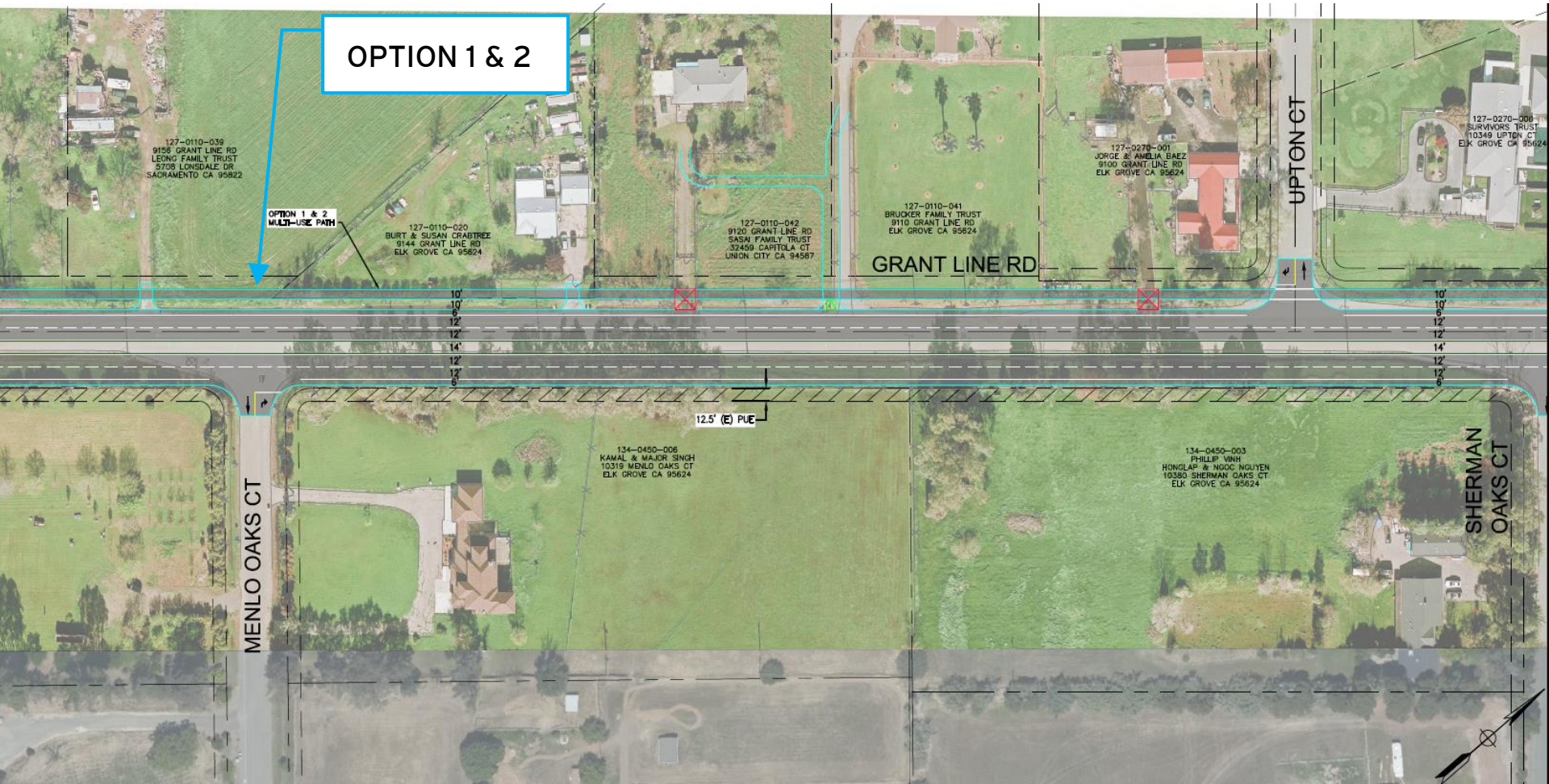


ROUNDAABOUT ALTERNATIVE 2A

Intersection: Grant Line Road/Bond Road

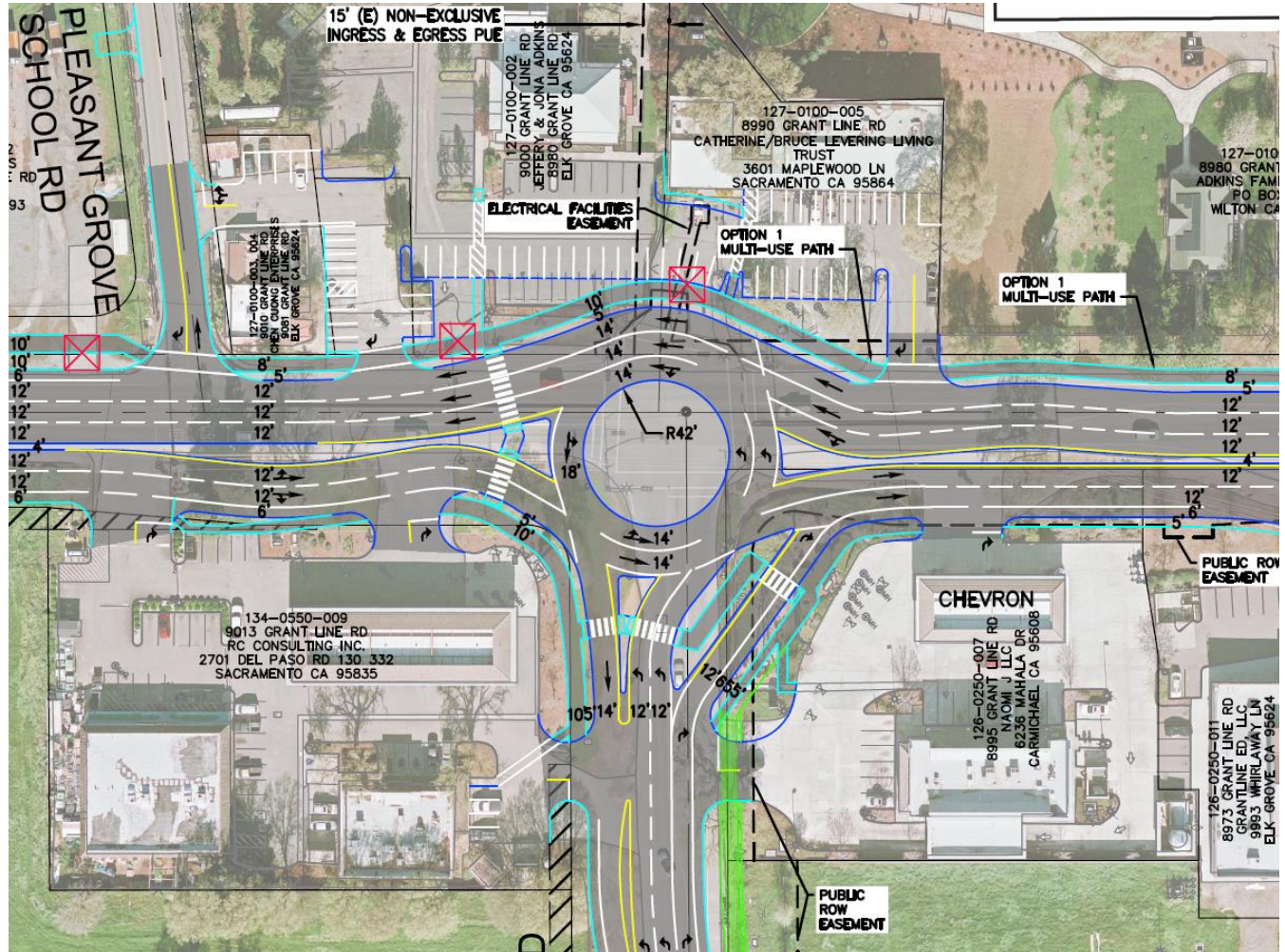
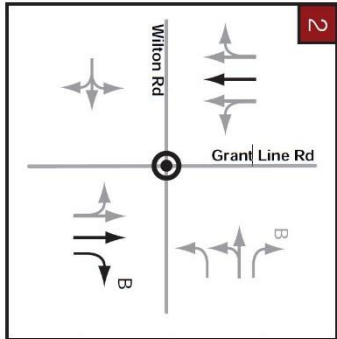


ROUNDBABOUT ALTERNATIVE 2A

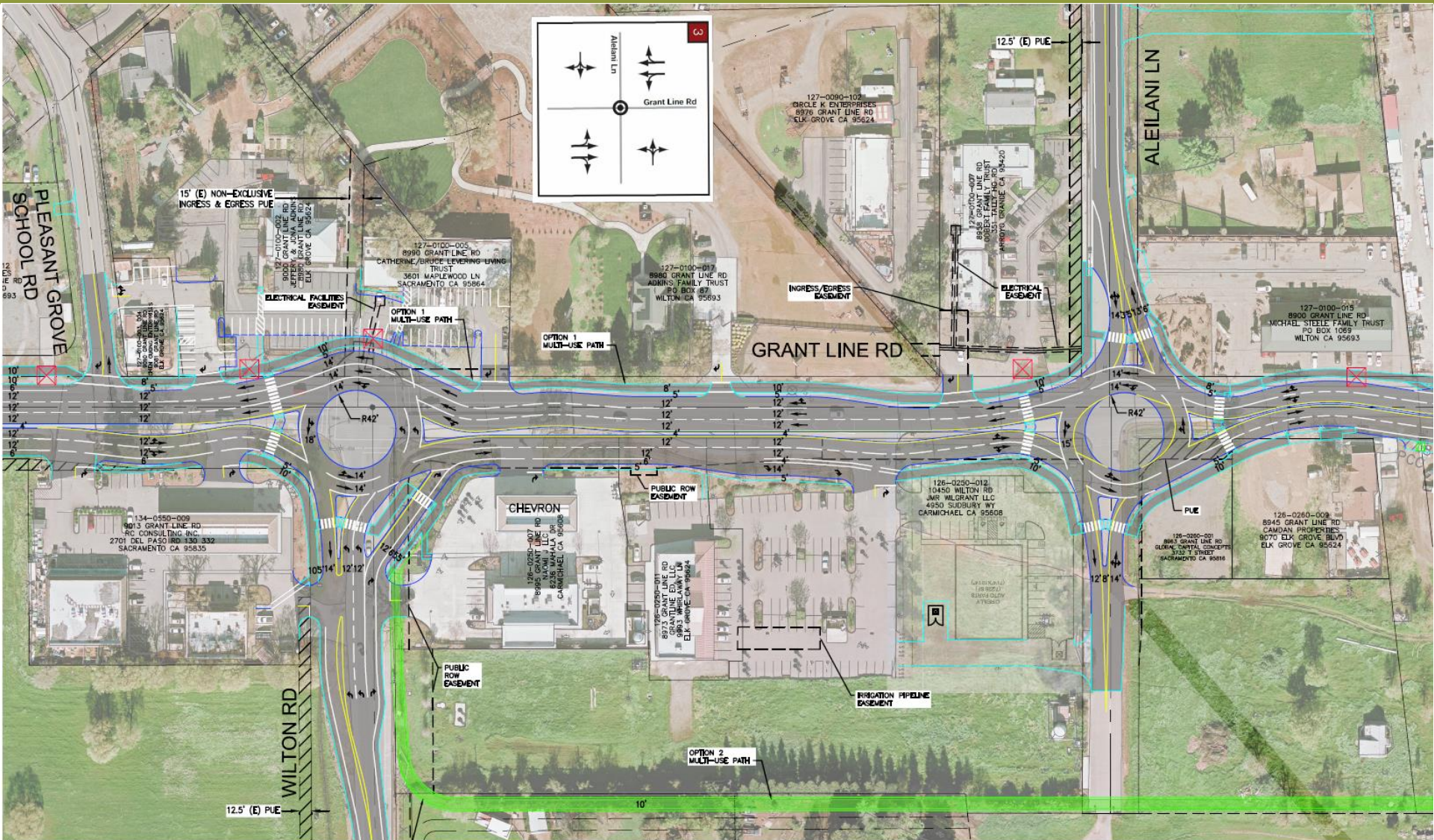


ROUNDABOUT ALTERNATIVE 2A

Intersection: Grant Line Road/Wilton Road

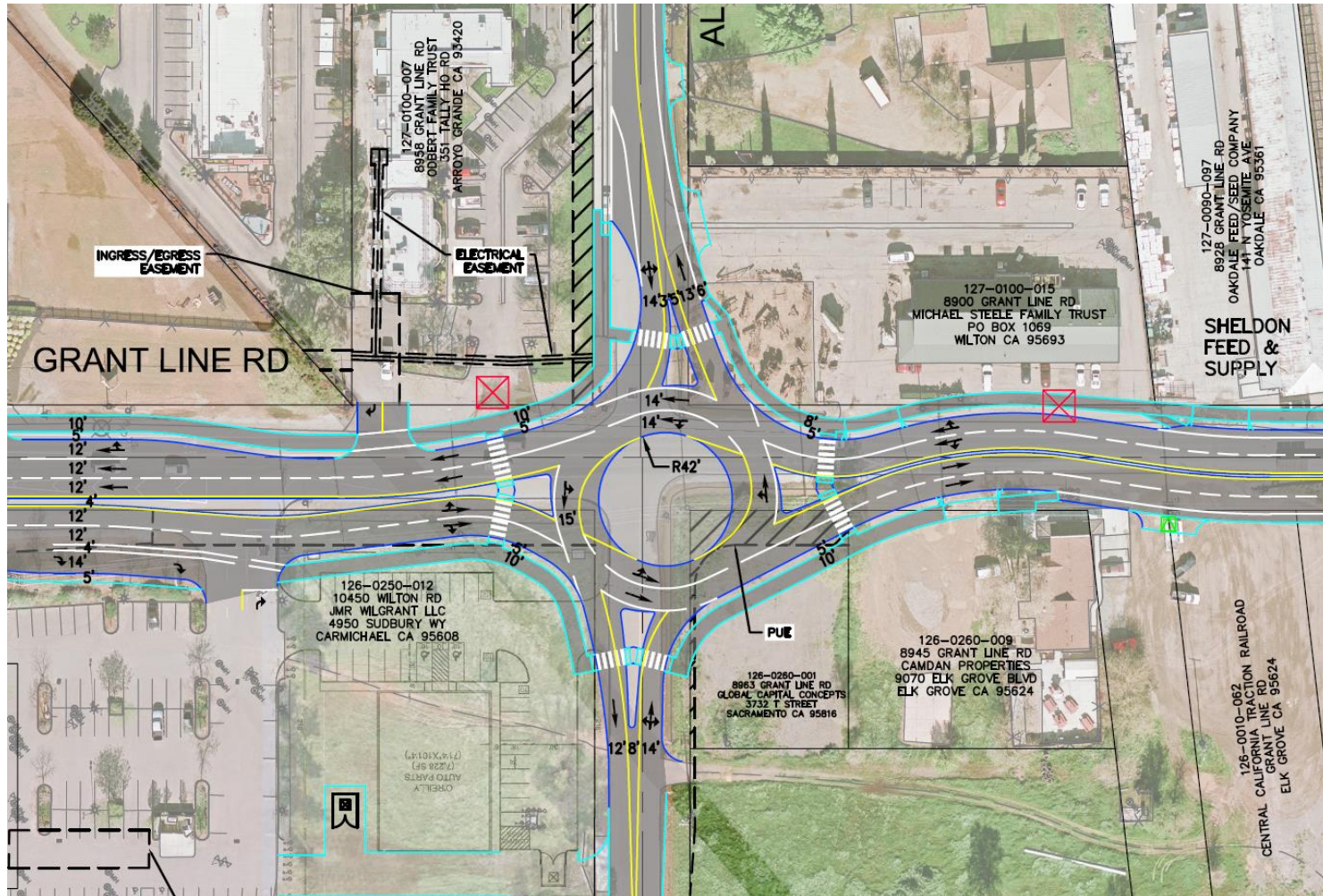
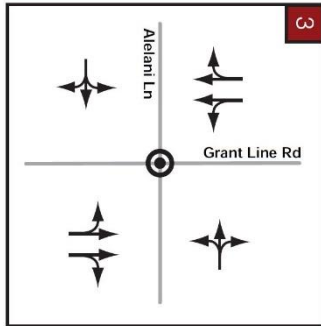


ROUNDAABOUT ALTERNATIVE 2A



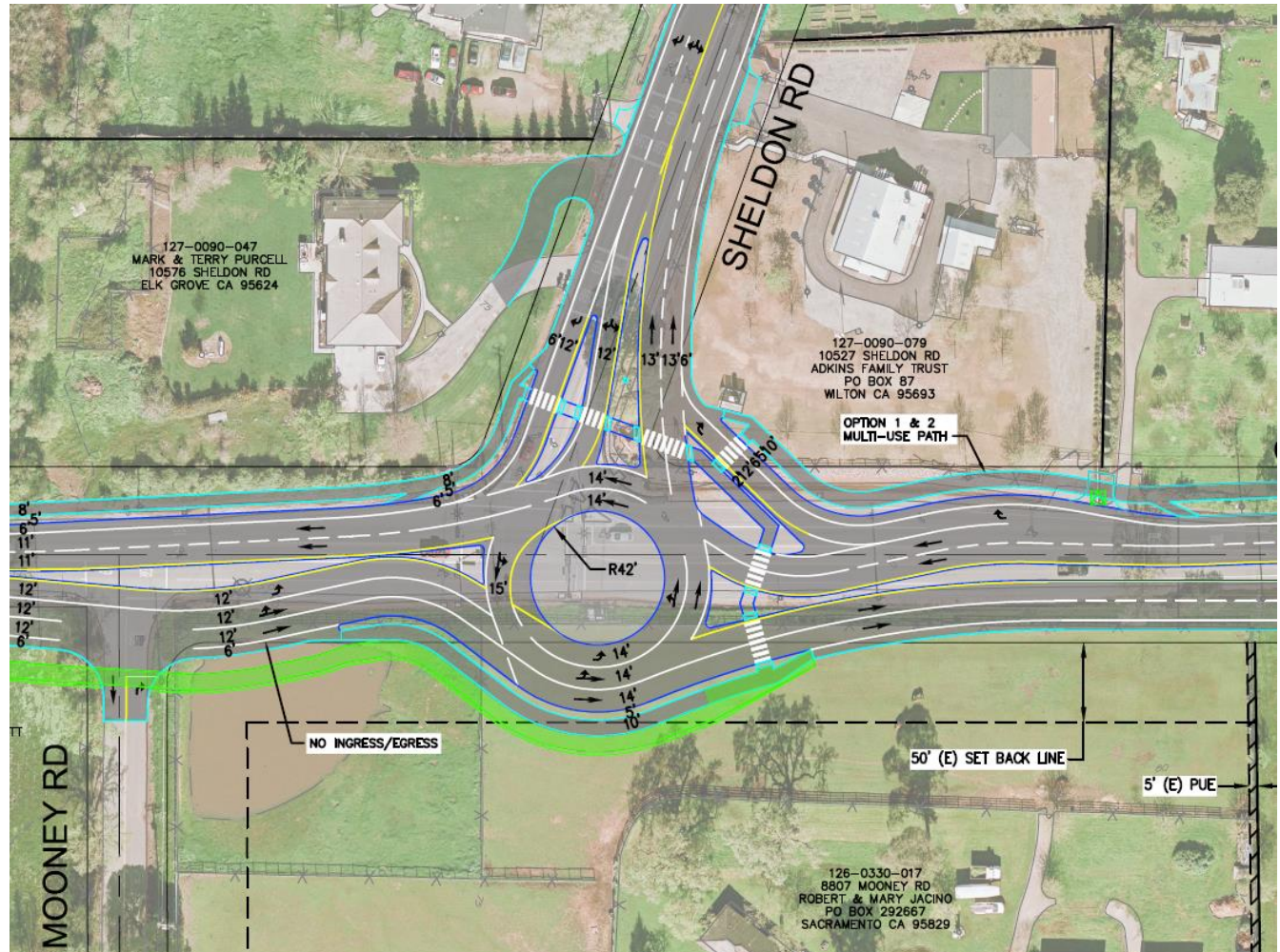
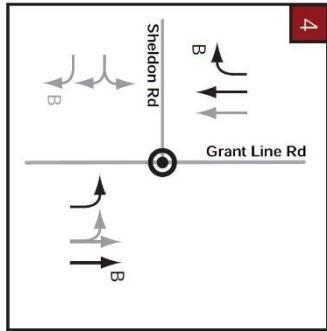
ROUNDABOUT ALTERNATIVE 2A

Intersection: Grant Line Road/Aleilani Lane

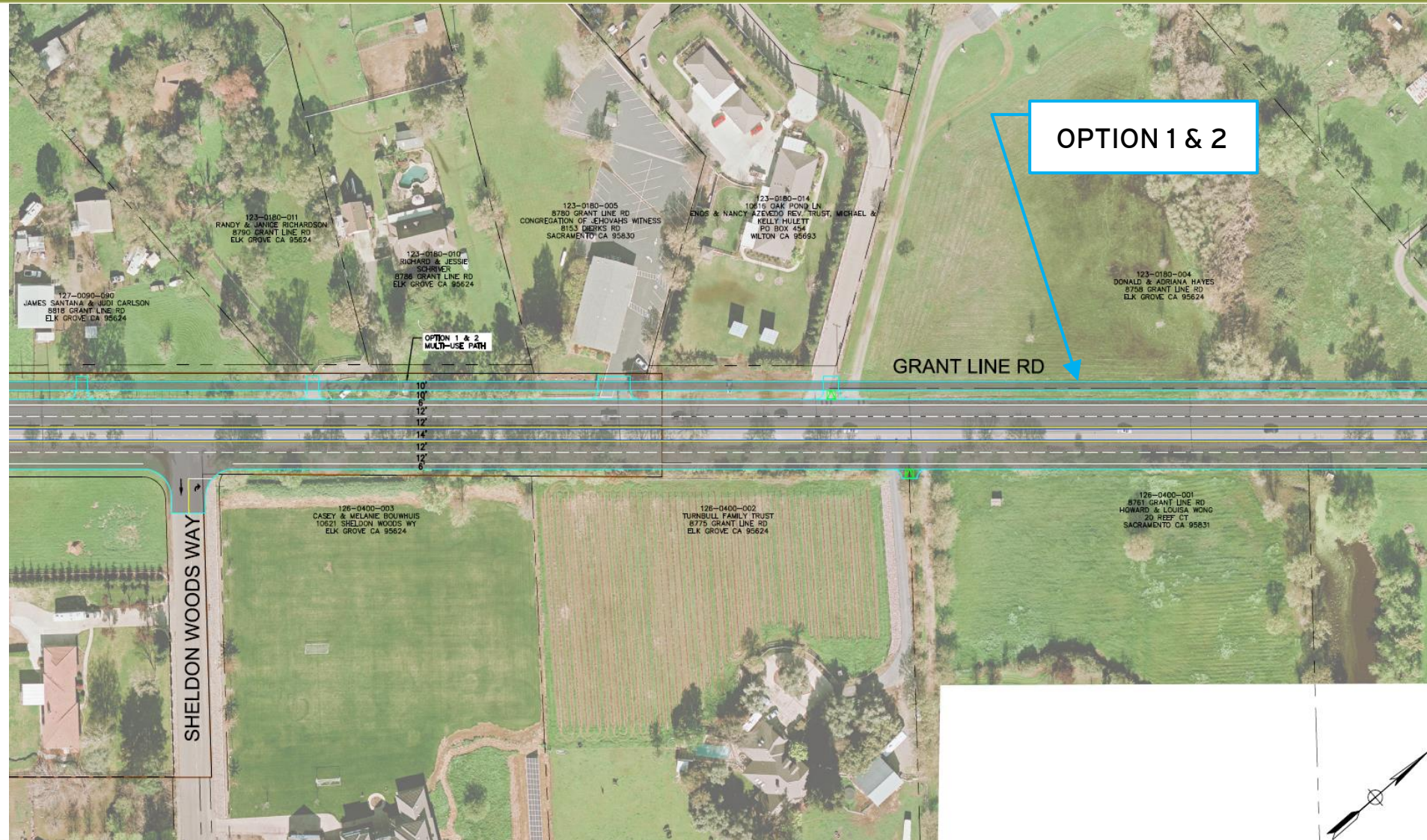


ROUNDAABOUT ALTERNATIVE 2A

Intersection: Grant Line Road/Sheldon Road

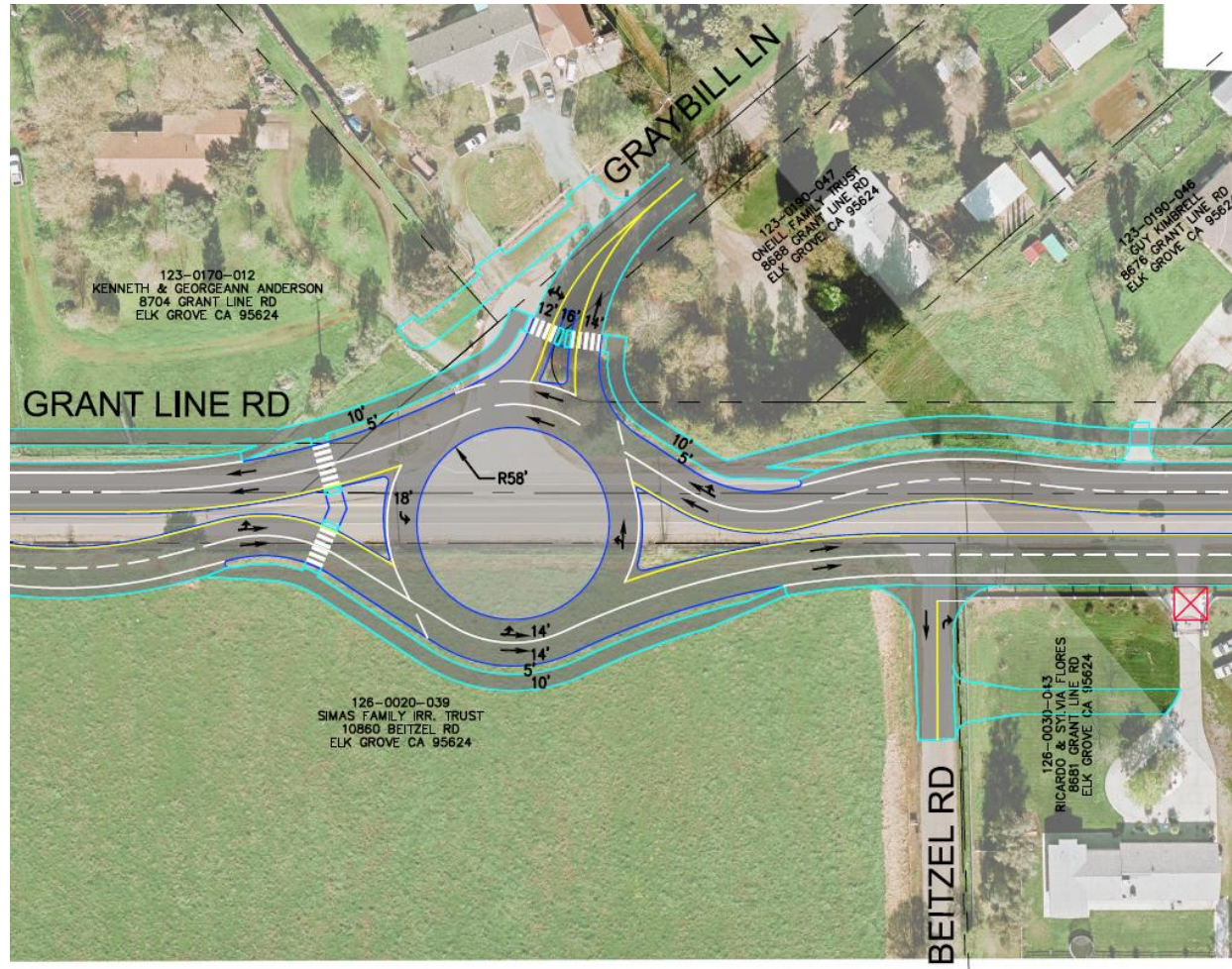
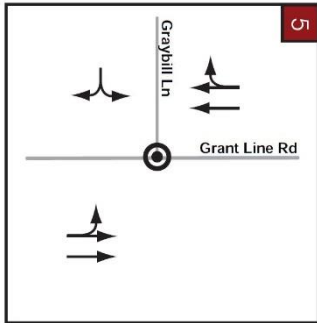


ROUNDABOUT ALTERNATIVE 2A

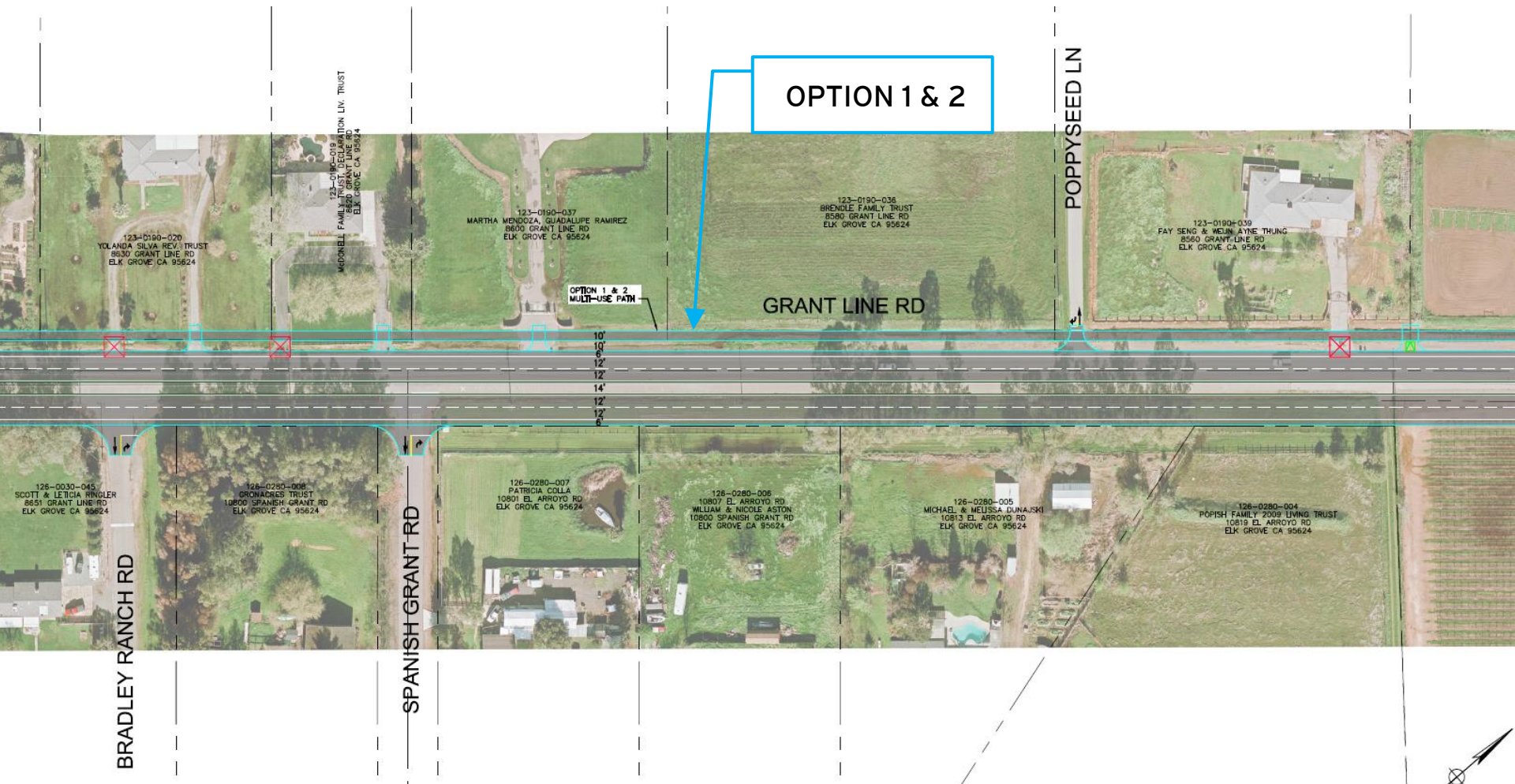


ROUNDABOUT ALTERNATIVE 2A

Intersection: Grant Line Road/Graybill Lane

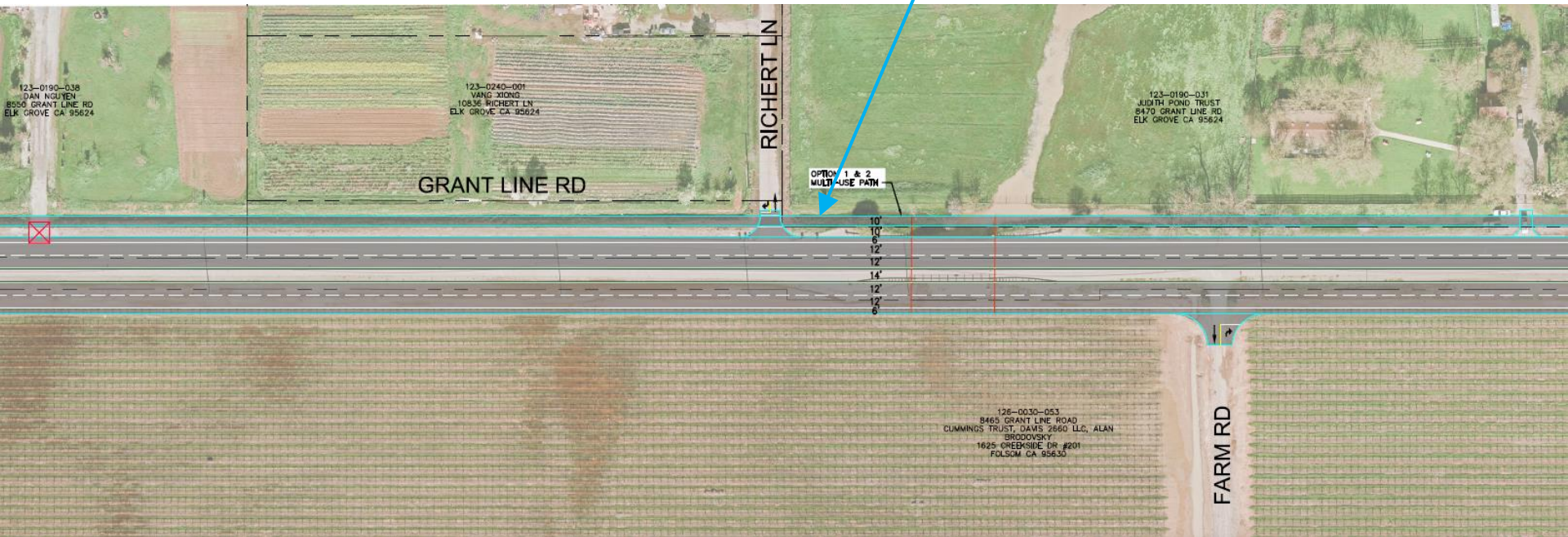


ROUNDABOUT ALTERNATIVE 2A

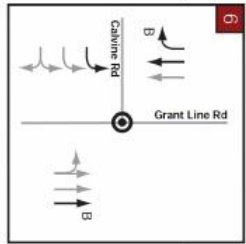


ROUNDBABOUT ALTERNATIVE 2A

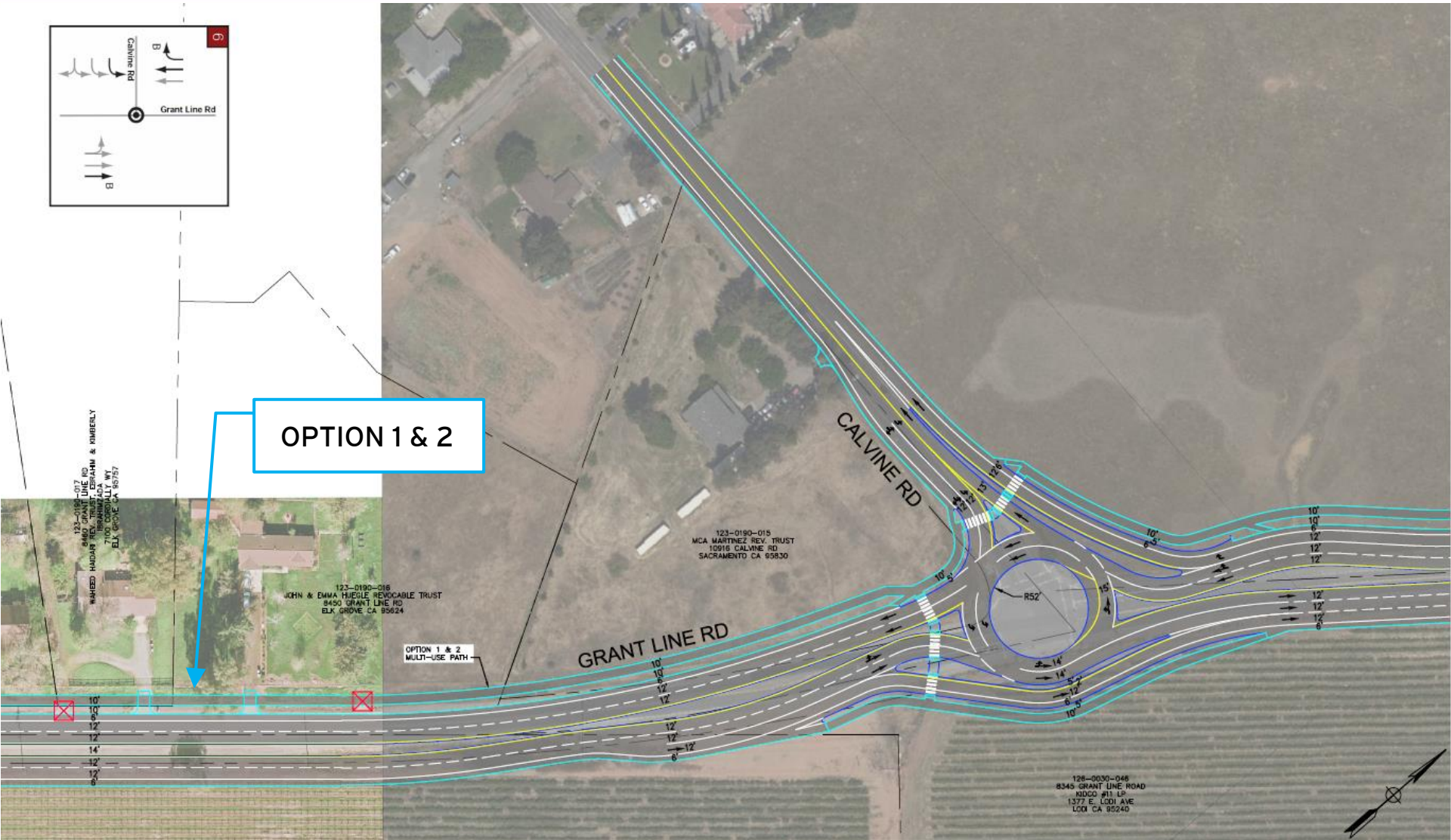
OPTION 1 & 2



ROUNDABOUT ALTERNATIVE 2A

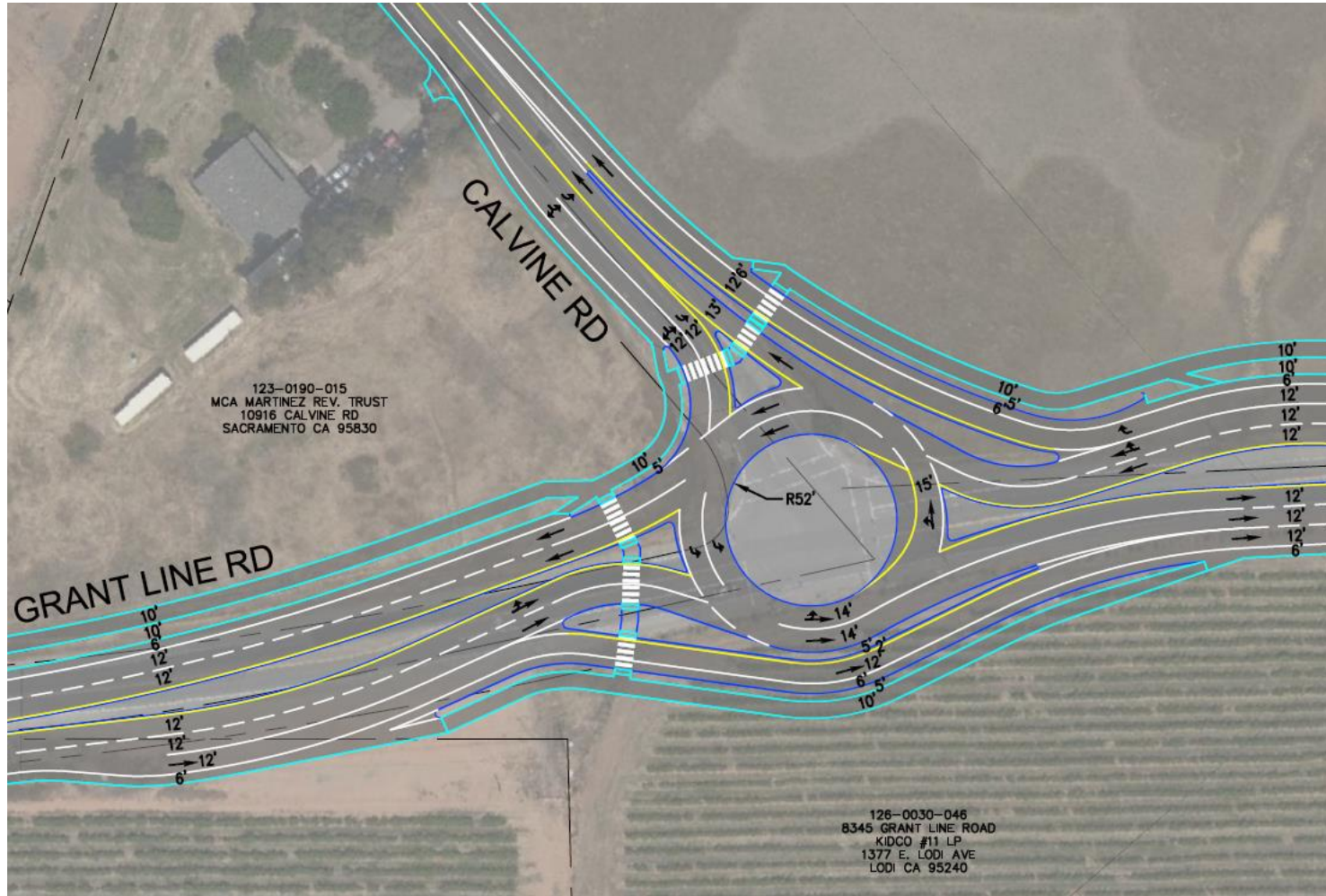
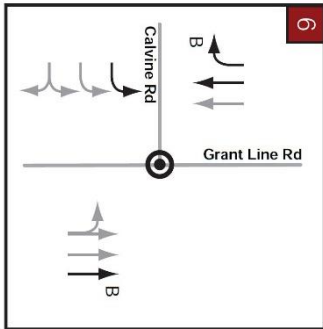


OPTION 1 & 2



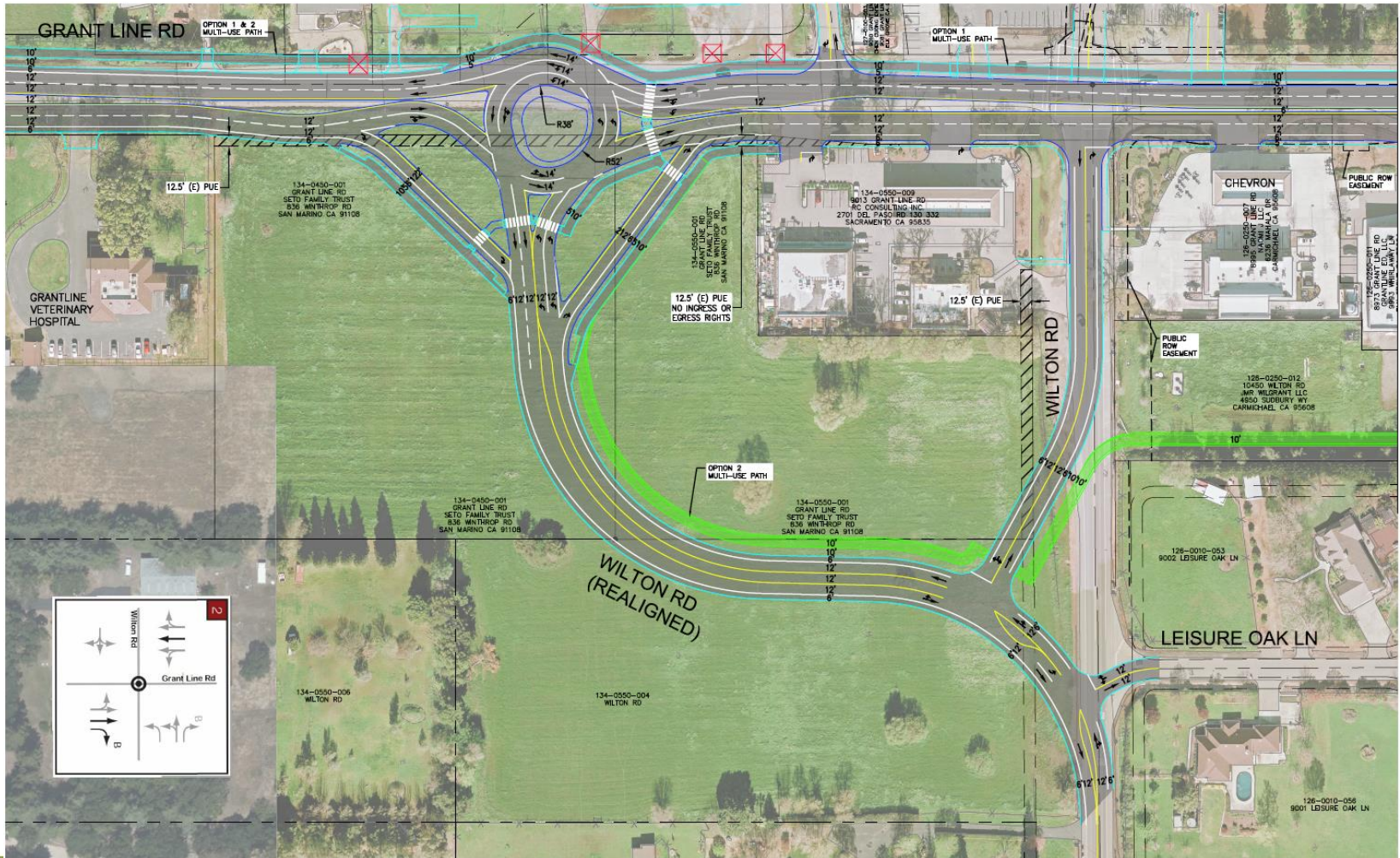
ROUNDBABOUT ALTERNATIVE 2A

Intersection: Grant Line Road/Calvine Road



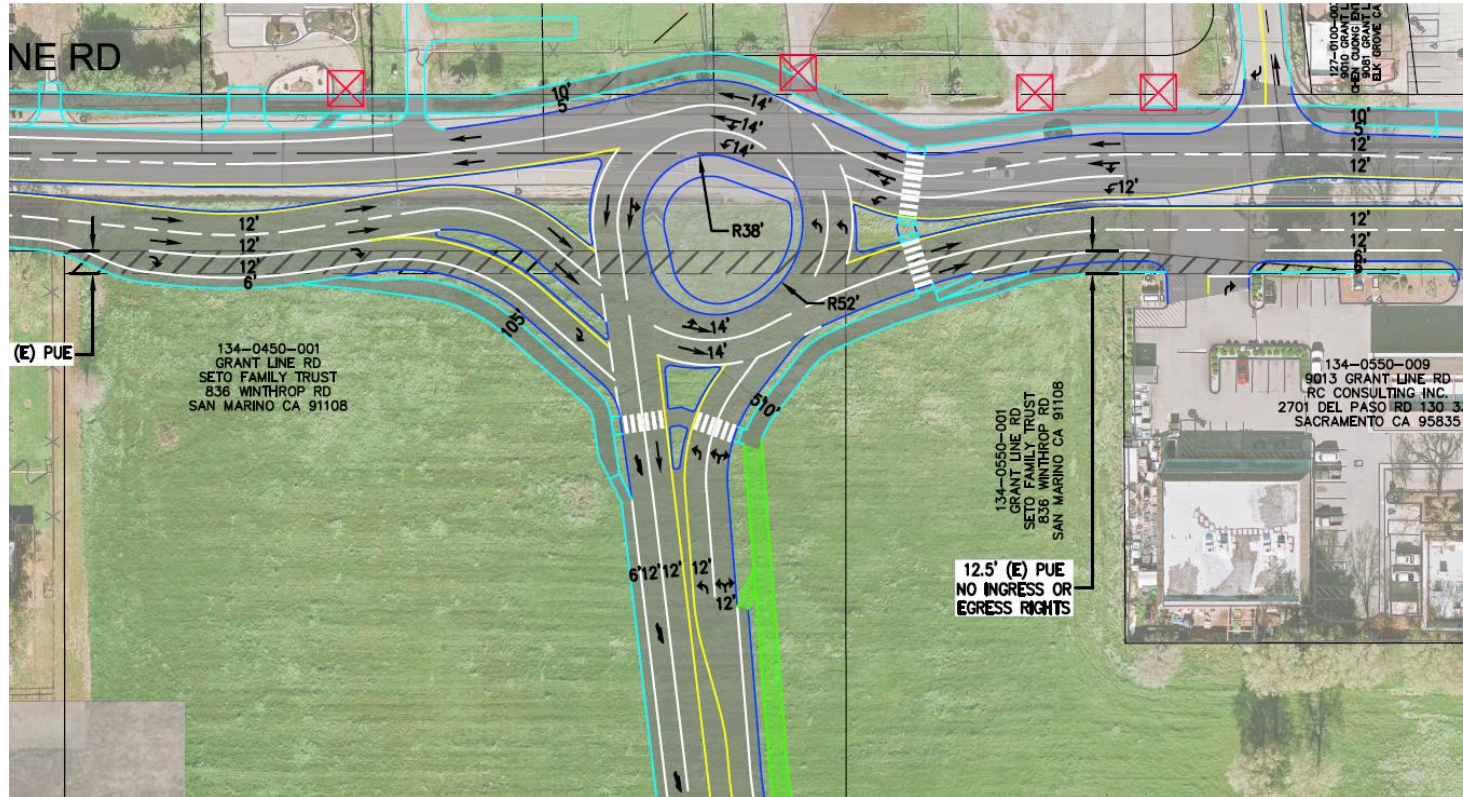
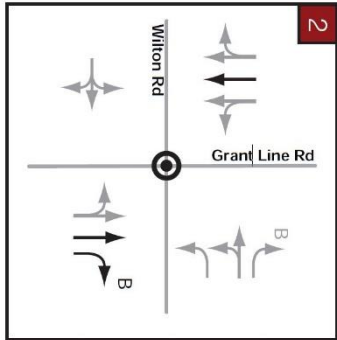
ROUNDABOUT ALTERNATIVE 2B

Intersection: Grant Line Road/Wilton Road (Realigned)



ROUNDABOUT ALTERNATIVE 2C

Intersection: Grant Line Road/Wilton Road (Realigned)



OPERATIONAL & SAFETY COMPARISON

Operational or Safety Component	Alt 1- Signals	Alt 2- Roundabouts
Intersection Delay	Inferior	Superior
% of Performance Target Served	Slight Loss	Slight Edge
Predicted Collision Rate	Slight Loss	Slight Edge
Collision Severity	Inferior	Superior
Operating Speed	Faster	Slower
Corridor Travel Times	Inferior	Superior
Overall Safety and Operations	Inferior	Superior

MULTI-USE TRAIL CONSIDERATIONS

- Trail Purpose- Serve as a 30 mile Regional Trail
- Trail Access- East West Connections from Elk Grove, Sacramento and Folsom, possible trailhead locations
- Trail Destinations- need to provide logical origins and destinations (Sheldon should be a destination)
- Trail in Harmony within the Community- right of way impacts, safety for users and property owners
- Trail in Harmony with the SouthEast Connector- needs to be multi-modal, fits with Connector in safe efficient manner

COMPARISON OF TRAIL OPTIONS

Trail Evaluation Criteria	Option 1- Congruent Westside	Option 2- Eastside At Grade	Option 3- Eastside Grade Separated
Efficient Long Distance Travel	Superior	Inferior	Neutral
Operational Impacts to Grant Line Road	Superior	Inferior	Superior
Visibility Along Trail- Safety	Superior	Inferior	Inferior
Impacts to property- Safety, impacts to use	Superior	Inferior	Inferior
Sheldon as a Destination	Superior	Inferior	Inferior
Rider Enjoyment	Neutral	Inferior	Superior
Cost- ROW and Construction	Superior	Inferior	Very Inferior
Overall	Superior	Inferior	Inferior

PUBLIC COMMENT & INPUT

Online Survey - 5 questions

- Which Grant Line Road Precise Roadway Plan Alternative do you prefer?
- Which Multi-use Trail alignment do you prefer?
- Other Comments?

NEXT STEPS

- Community input will be collected and considered for incorporation into study
- Individual property owner outreach based upon requests from owners
- Finalize the Alternatives to include drainage, utilities and future right of way lines
- Initiate Environmental Review for Precise Roadway Plan
- Second Public Meeting in Spring 2021
- Finalize Study and Adopt Precise Roadway Plan- Summer 2021

QUESTIONS AND ANSWERS

- Will post exhibits tomorrow
- Will post follow-up FAQ
- Staff will respond to as many questions as possible tonight
- Specific questions related to your property, provide name and email to schedule follow-up with staff



QUESTIONS AND ANSWERS

Grant Line Road Precise Roadway Plan



Contact Information:
John Stayton
jstayton@elkgrovecity.org

Link to Alternatives and Presentation:

[Grant Line Road - Sheldon Area Precise Roadway Plan](#)

Link to Project Survey:

www.elkgrovecity.org/grantlinesurvey